



HARROGATE
COLLEGE



20
25

School Leaver Prospectus



Your **first choice** for career-focused courses

Open Events

Our open events give you the chance to discover more about our courses, facilities and college life. We run regular open events at our campus throughout the year - see below for upcoming opportunities to visit us.

2024

Wednesday 23 October 5.30-7pm

Wednesday 20 November (Taster Event) 5.30-7pm

2025

Tuesday 11 February 5.30-7pm

Wednesday 23 April 5.30-7pm

Wednesday 25 June 5.30-7pm

For more details and our latest event calendar, please click here.

If you require any additional support at the open events, please email EventsMarketing@luminare.ac.uk

Click here



Welcome to Harrogate College

From your first day at college to your last, you will be welcomed, supported and encouraged so that you can achieve your dreams, grow as an individual and leave confident to embark on your future.

Our values are at the heart of our college and alive in everything we do. From our curriculum which we adapt to ensure you are learning what you need to succeed beyond college, to our inclusive environment where all are welcomed and can find a place to learn, develop and thrive.

We work hard to foster relationships with local businesses and employers to give you greater opportunities beyond

the classroom. These connections help inform our curriculum ensuring you benefit from progressive, relevant lessons that equip you with the knowledge and skills that employers seek.

To get a greater sense of what we offer, and to experience our welcoming community for yourself, come and visit during one of our open events. You can visit our industry-standard facilities, meet the staff that make this place so special and see for yourself why we're the choice for students who want more.

Danny Wild
Principal



We believe in guiding students towards their goals, equipping them with the confidence and strength of mind for future endeavours.

Progressive: Harrogate College is forward thinking in all aspects - from teaching to the environment

Nurturing: Harrogate College encourages everyone to reach their potential in a safe and caring environment

Inclusive: Harrogate College welcomes everyone





Contents

Open Events	1
Welcome to Harrogate College	2
Getting to Harrogate College	5
How to apply	7
Your route	8
Entry requirements	9
What does a week look like?	10
T Levels	11
Apprenticeships	13
STEM 7	17
Our Facilities	19
Our Support Services	21
Safeguarding & Wellbeing	23
Special Educational Needs and Disability (SEND) Support	25
Student Life	26
ilearn	27
Our courses	28



Art & Design	29
Beauty Therapy	33
Business	39
Catering & Hospitality	44
Childcare & Education	48
Construction & Joinery	51
Digital & IT	57
Electrical	63
English for Speakers of Other Languages (ESOL)	67
Foundation Learning	68
Hairdressing	73
Health & Social Care	79
Motor Vehicle	83
Science	87
Sport	91
Uniformed Protective Services	95
Adult Learning at Harrogate College	99
Notes	101

Getting to Harrogate College

**Harrogate College, Hornbeam Park Avenue,
Hornbeam Park, Harrogate, HG2 8QT**

Where possible, we encourage all staff, students, parents/carers and visitors to travel sustainably.

Walking

Stretch your legs with a walk over the famous Stray! The walk from Harrogate town centre will take you approximately 20 minutes.

Cycling

The cycling route from Harrogate town centre, via the Stray, should take around 10 minutes. The bike shelters at college are secure and available to all staff and students.

Train

The college is just a two minute walk from Hornbeam Park train station, which is on the York to Leeds line. In just three minutes, students boarding a train from Harrogate station will arrive at Hornbeam Park station.

Bus

Harrogate College is served by an extensive public bus network; here are just a few of the buses that can get you to us:

Boroughbridge – 21 bus to Knaresborough then 1, 1A, 1B, 1C, 1D

Knaresborough – 1, 1A, 1B, 1C, 1D

Leeds and Ripon – 36 bus

Pateley Bridge – 24 bus

Wetherby – 7 bus or X70 bus

For information on your route to college or financial assistance with travel, please visit our website.

Good to know!

We have received Modeshift STARS accreditation, for our commitment to promoting sustainable and active travel in the community.



The Stray

St Aidan's Church of
England High School



Oatlands Dr

St John Fisher
Catholic High School



Hookstone Rd

Harrogate College



Hornbeam Park
Train Station ➡

How to apply

Ready to begin your educational journey? Here's how.

For more information, visit harrogate-college.ac.uk

1. Search for a course

In our prospectus, on our website or at an open event

2. Apply

Via our website, over the phone or in person at Harrogate College

3. Invitation to interview

Our Admissions team will invite you to book an interview

4. Your interview

Our tutors will talk through your chosen course

5. Offer

If you are successful you will receive an offer from your chosen course department

6. Accept your offer

Via email or over the phone

7. Taster Day* and Parent & Carer Event

Great opportunities to get to know Harrogate College

8. Book your enrolment slot

Over the summer we will invite you to book your slot

9. Enrol

The final step! **Congratulations** - you are now a Harrogate College student



*Taster Days are primarily for 16-18 year olds

Your route

**We understand no two journeys are the same.
That's why our flexible progression paths
make your ambitions easier to achieve.**

Our courses and apprenticeships let you advance through different academic levels, whilst choosing whether to continue your studies, progress to university or enter employment.

Levels

Level 7 = equivalent to Master's degree

Level 6 = equivalent to third year of university degree

Level 5 = equivalent to second year of university degree

Level 4 = equivalent to first year of university degree

Level 3 = A Level equivalent, T Level and technical courses

Level 2 = equivalent to GCSE, occupational entry level

Level 1 = Introductory level, pre-GCSE

Entry level = foundation learning

**For more information on specific routes, speak to a member
of our team, email contact@harrogate-college.ac.uk**

Can I change my course once I've started?

We understand sometimes things don't work out and it's important that you talk to us about any concerns you're having. It may be possible to change your course, however, the first step would be to speak with your tutor.

Entry requirements

Level 3

5 GCSEs at grade 4 and above, including English and maths

Level 2

Typically 3-4 GCSEs at grade 4 and above

Level 1

Typically 3-4 GCSEs

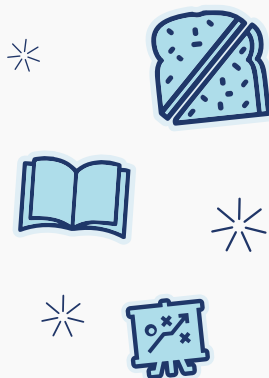
Entry

No formal entry requirements

Exact entry requirements for T Level qualifications may vary according to the subject, speak to our Admissions team for further information. Personal circumstances will be considered for individuals who don't meet the exact requirements.


















What does a week look like?



Your time at college will be structured around your weekly timetable. This will be unique to you and will factor in the course you choose to study, enrichment activities and tutorials.

Example timetable:

	Monday	Tuesday	Wednesday	Thursday	Friday	
9am	Lesson 	Non-college day  *	Lessons 	Lesson 	Lessons 	
10am	Tutorial 			Enrichment 		
11am	Enrichment 			Lessons 		
12pm	Lunch 		Lunch 	Lunch 	Lunch 	
1pm	Lessons 		Self-directed learning 	Self-directed learning 	Lessons 	
2pm			Enrichment 		Tutorial 	
3pm					Enrichment 	

*Typically you will spend four days a week in college, unless you are taking a T Level in which case you will attend five days a week



Carbon Literacy Project

Good to know!

All students complete Carbon Literacy training through their time with us, to improve awareness of carbon costs and the impact of everyday activities.





T-LEVELS

What is a T Level?

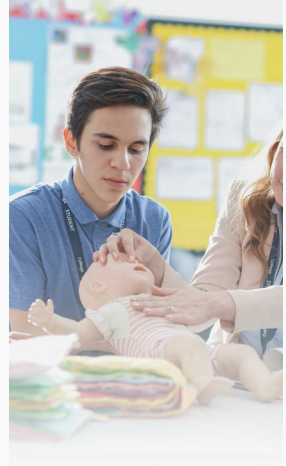
T Levels are a two year course, equivalent to three A Levels. They combine academic study with industry experience: 80% classroom learning and 20% work placement.

T Levels focus on transferable skills, expert knowledge and learning that will get you hired, or ready for university. They're also industry-recognised, and they have been endorsed by over 200 businesses across Yorkshire.

Whether you want to go to university or straight into skilled employment after your studies, you can get there with T Levels.

For more information about T Levels, including our guide for parents and contact for employers looking to offer industry placements, click here or visit harrogate-college.ac.uk/t-levels

[Click here](#)



I've always been interested in information technology, especially programming. So when one of my tutors told me about this T Level, I knew it would be perfect for me. So far I've had the chance to learn about a variety of areas, including internet networks, security and programming, which is still my favourite. There are so many different aspects of IT that I'd never even heard of, so taking this course has been great to expand my horizons.





To find out more about apprenticeships,
click here or visit
harrogate-college.ac.uk/apprenticeships

[Click here](#)

Apprenticeships



What are apprenticeships?

An apprenticeship combines the world of work with the world of learning.

An apprentice gains hands-on practical training as well as off-the-job learning.

Open to anyone aged 16 and over, you learn the skills and develop the knowledge you need to work in your chosen field, while employed in a salaried job.

We work with fantastic employers, offering apprenticeships in a wide range of industries and roles.



I was already working part-time in a restaurant where my dad was a chef. The course made me understand the industry much better and helped me decide that this is the career I'd like to pursue.



Typically we offer apprenticeships in the following areas:

- > Adult Care
- > Auto-mechanic
- > Business Administration
- > Construction
- > Early Years Education
- > Electrical
- > Hair & Beauty
- > Hospitality
- > Science & Pharmaceutical

Why choose an apprenticeship with Harrogate College?

- > Harrogate College is part of the Luminate Education Group, one of the largest further education institutions in the country with more than 20,000 students, and we are one of the biggest providers of apprenticeships regionally
- > We have strong industry links with local, regional and national employers, ensuring your apprenticeship covers relevant and current content - giving you the best training and increased opportunities for career progression
- > We provide a diverse and vibrant learning environment which inspires life-changing opportunities. We pride ourselves on our excellent facilities which include professional kitchens, laboratories, engineering workshops, salons and childcare facilities

How to apply

Whether you have an idea of the industry in which you want to work, or whether you have no idea at all and want to know more about the apprenticeships out there, we can help. If you are currently employed and want to start an apprenticeship, we can help with that too.

1. Explore our apprenticeship vacancies
2. Complete the application form for your chosen vacancy
3. Attend an interview with your potential employer
4. Once successful, you will be inducted into your apprenticeship

To find out more about apprenticeships, visit harrogate-college.ac.uk/apprenticeships

Apprenticeships

Our vacancies are advertised on a regular basis: **explore current opportunities on our website**

[Click here](#)

Course	Level	Duration (Months)
Adult Care		
Adult Care Worker	Level 2	18
Lead Adult Care Worker	Level 3	18
Auto-mechanic		
Autocare Technician	Level 2	48
Motor Vehicle Service & Maintenance Technician (Light Vehicle)	Level 3	36
Business Administration		
Business Administrator	Level 3	18
Construction		
Bricklayer	Level 2	24
Carpentry & Joinery	Level 2	24
Horticulture or Landscape Construction Operative	Level 2	24

Early Years Education

Early Years Practitioner	Level 2	15
Early Years Educator	Level 3	21

Electrical

Installation Electrician/ Maintenance Electrician	Level 3	48
--	---------	----

Hair & Beauty

Hair Professional (Hairdressing)	Level 2	24
Advanced Creative Hair Professional	Level 2	12

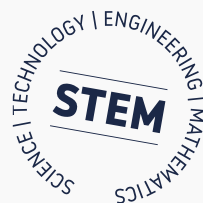
Hospitality

Commis Chef	Level 2	18
Chef de Partie	Level 3	18
Production Chef	Level 2	15
Senior Production Chef	Level 3	12
Hospitality Team Member	Level 2	12
Hospitality Supervisor	Level 2	15
Hospitality Manager	Level 4	18

Science & Pharmaceutical

Pharmacy Technician (Integrated)	Level 3	24
----------------------------------	---------	----

STEM 7



STEM refers to the four academic disciplines of science, technology, engineering and maths.

We offer a range of courses within these areas, all designed around abilities employers actually look for. They're available at school leaver, intermediate and higher education levels – taking you one step closer to securing your dream role.

As a college, we are committed to the skills we call STEM 7:

	Creative thinking		Intellectual curiosity
	Communication		Flexibility
	Problem-solving		Collaboration
	Data-driven decision-making		

These skills are embedded across our curriculum, as well as throughout your student experience. They boost your creative and problem-solving abilities, and even help you analyse information more effectively.



Our Facilities

Science laboratories

Our cutting-edge laboratories feature the latest technology, multiple workbenches and quality equipment – increasing the efficacy of results and allowing for team collaboration. Students learn how to carry out procedures, applications and research in a realistic workplace setting.

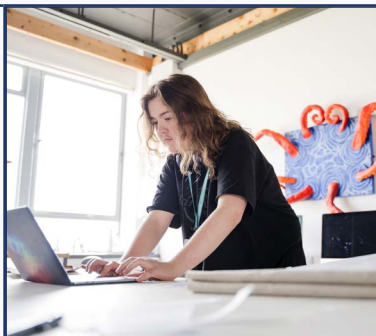


Technology centre

Home to electrical studies, motor vehicle, joinery, painting and decorating, and more – our innovative technology centre is where manual skills and creativity combine. Equipped with state-of-the-art equipment, our working garage, welding bays, joinery suite, electrical workshop and construction yard lets learners develop their skills in safe industrial settings.

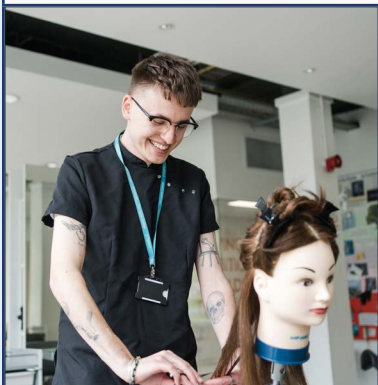
IT suite and creative studios

Here is where you will find everything digital, from PCs and iMacs to professional software for specialisms like animation and games development. Students can showcase their originality in our photography, art and recording studios – designed to inspire with retro-styled interiors.



Craft Bistro

Students develop their culinary flair in our modern production kitchen, using professional equipment and training bays. Training from industry chefs provides students with skills and knowledge for their future professional ventures. Open to students, staff and the public, the Bistro offers a contemporary dining experience for all.

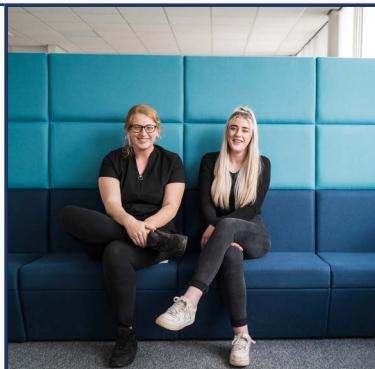


Craft Salon

Open to the public, our professional salons provided the perfect setting for students training to work in the hair and beauty industry. From hairdressing to nail treatments, beauty therapy to tanning, students learn from expert teachers, in a realistic working environment.

Active Learning Zone (ALZ)

Our Active Learning Zone provides a quiet area to study, read and regroup in between classes. With computers, spaces for individual work and a designated area for collaborative working, the ALZ is where you can carry out research, access learning materials and get assistance from our support staff.



Good to know!

We aim to be a Carbon Net Zero college by 2035.

Our Support Services

Whatever your concerns, we're here to make your time with us as stress free as possible. Our support services can help with a wide range of issues – from academic and financial matters to personal circumstances.

Finance

We believe finance should not be a barrier to a good education. We may be able to provide support with costs in areas including travel, meals, childcare, equipment, course kit, and residential and educational visits, depending on your eligibility.

For more details, click here or visit harrogate-college.ac.uk/financial-support or call us on 01423 879 466.

Click here

Wellbeing and mental health

We're dedicated to our students' wellbeing, and staff across the college can listen, advise and help explore different options. All students have access to counselling support, while our Student Life team offers drop-ins, and promotes mental health and wellbeing through extracurricular activities. Students can also speak to their tutors or dedicated pastoral lead.

Careers support

Whether it's more education, an apprenticeship or employment, when it comes to next steps, there's a lot to think about.

Our impartial careers advice service can help you plan your future and work towards your goals. Students have opportunities to connect with employers, develop their employability skills, gain work experience and plan their next steps.



You can also book a 1:1 appointment with our career adviser to gain help with:

1. Understanding your options
2. Decision-making
3. Choosing, or changing to, the right course
4. Searching for, and finding, an apprenticeship or work
5. CVs, applications and cover letters
6. Applying to university and personal statements
7. Supported internships and alternative education (for students with an EHCP)
8. Planning and managing your progression

If you're a student, please speak to your tutor about an appointment or email contact@harrogate-college.ac.uk

If you're a parent or carer, you are welcome to access the careers service with the student.

Learners benefit from very well-structured careers, education, information, advice and guidance that prepare them well for their next steps. Careers staff work very closely with curriculum teams to help learners and apprentices understand the potential routes available to them, such as higher-level apprenticeships, further and higher education programmes and employment.

Ofsted report, 2022



Safeguarding & Wellbeing

It's okay to need some extra support...

Exam stress? Worried about your wellbeing? We can help. We work hard to ensure your college experience is the best it can be.

Mental health and wellbeing support

It's always good to talk. Our students can access a team of counsellors and mental health officers, and we have dedicated pastoral staff who can refer you to support services. If you are worried about someone else, our Safeguarding team is also available for support and advice.

Our Oasis Room is a safe space to calm down if you are experiencing anxiety, stress or sensory overload. As well as diverse spaces within the building, we have created a Garden of Sanctuary, a peaceful space for quiet reflection and a chance to re-charge during a busy day.

Academic support

You will receive academic support from your teachers and coaching tutors. You can also contact our ilearn team for skills training, 1:1 advice, workshops or engaging learning materials. Or visit our Active Learning Zone to access a range of resources such as books, Google Chromebooks, CDs and DVDs.

Additionally, you can take part in exam preparation sessions.





Safeguarding

We are committed to making sure all students and staff are protected from harm. All staff are trained in safeguarding and child protection, and our dedicated Safeguarding team is on hand for advice and support. Don't stay silent, we are here for you.



Prevent

We take terrorism seriously, so we closely follow the Prevent scheme outlined by the government. We aim to prevent people from being drawn into all forms of extremism by educating and raising awareness of issues that could endanger or cause harm.



Restorative Practice (RP)

All staff at Harrogate College are trained to follow a restorative approach. Restorative Practice is a process based around the power of communication. It looks at repairing harm, building resilience, developing relationships and understanding the power of communication.



Equality, Diversity and Inclusion (EDI)

We are proud to be Investors in Diversity. We aim to create an inclusive learning environment that celebrates all differences and challenges discrimination. We want everyone to feel able to fully participate in college life and achieve their full potential.

The staff here at Harrogate College are always kind, patient and willing to help. They explain everything very well and go into detail when we need more information.

Special Educational Needs and Disability (SEND) Support

If you're a SEND student requiring specialist support, we can help in many ways.

Our friendly team is on hand to ensure everyone has a positive college experience and their needs are supported.

Below are some of the ways we can help:

Quality First Teaching (QFT) support:

- > In-class differentiation, including smaller tasks and visual handouts
- > Referrals to Child and Adolescent Mental Health Service (CAMHS), careers, mental health and wellbeing services
- > Risk assessments
- > Medical storage and access arrangements

Targeted Teaching support:

- > Small group work
- > Exam access arrangements (evidence from previous secondary school required - please contact the SENco)
- > Independent time out of class
- > Aids and adaptations, including adjustable tables and chairs
- > In-class support (for those with an Education Health and Care Plan, EHCP)

Students also have access to our sensory room – a safe space to address times of stress, crisis, sensory overload, mental health issues or even periods of sudden change.

Support is assessed on an individual basis and varies depending on the person's needs, and/or their Education Health and Care Plan (EHCP). Once assessed, a personalised support plan will be created and only shared with others on a 'need-to-know' basis.

To arrange SEND support, contact
SENDSupport@harrogate.ac.uk

Student Life

Make the most of your time at college with our extracurricular activities. From making new friends over a cuppa, to taking part in a garden action day, we hope our activities and events provide something for everyone. We're always looking for new suggestions, so if there's a hobby you'd like to pursue, let us know - we may be able to support you to do this.

Example clubs, societies and events:

- > Arts and Crafts
- > Black History Month
- > Brew and Chat Drop-ins
- > Careers Fair
- > Environmental Champions
- > Games Club
- > Garden Action Days
- > Green Month
- > LGBTQ+ Society
- > Mental Health Champions
- > Mental Health Week Carnival
- > Refugee Week
- > Social Action Group

You can develop your leadership skills by becoming a class representative, wellbeing ambassador or 'I'm in Green' champion.

The Students' Union

All students become automatic members of our Students' Union – allowing everyone to have a say in college life. We also run a Student Voice system where representatives from each class feed back to senior college members. Your suggestions are taken into consideration by the leadership team to ensure that your voice is heard.

Why not run for Students' Union President? This paid position lets you represent your peers, whilst developing skills that make your university personal statement and CV stand out.

You can also volunteer on the Students' Union Committee and represent fellow students on topics such as mental health, equality and diversity, sports and societies, and education.

Good to know!

Our Sustainable Fashion Show features biodegradable clothes and explores visual narratives around ocean waste and the climate emergency.





Access ilearn via
ilearnservices.site

[Click here](#)

ilearn



Our goal as Harrogate College's ilearn team is to help students develop their independent learning skills and achieve personal goals.

We support students in five key areas:

Academic skills - all things assignments and writing to get the best grades possible

Independent skills - tools and skills you need to be autonomous and less reliant on your teachers, keeping you top of the game

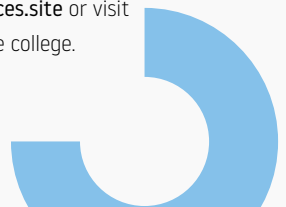
Digital skills - we use Google and lots of apps that help you become digitally savvy

Future-ready skills - getting you ready for the next step or improving your employability

Digital sense - understanding your digital world, online footprint, cybersafety and more

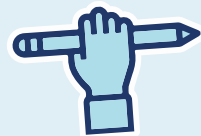
We are on hand to deliver both full classes or more personal one-to-one sessions with students to support their learning

Access ilearn via ilearnservices.site or visit us on the second floor of the college.





Our courses



We are constantly updating our courses to meet the labour market and industry needs.

Visit our website for the most up-to-date course information.



Art & Design	29
Beauty Therapy	33
Business	39
Catering & Hospitality	44
Childcare & Education	48
Construction & Joinery	51
Digital & IT	57
Electrical	63
English for Speakers of Other Languages (ESOL)	67
Foundation Learning	68
Hairdressing	73
Health & Social Care	79
Motor Vehicle	83
Science	87
Sport	91
Uniformed Protective Services	95
Adult Learning at Harrogate College	99

Art & Design

Job Advertisements



3,717

Industry



Expected to rise by 5%
over the next five years

Average Salary



£30,016 (2023-2024)

Good to know!

The UK Government aims to grow the creative industries by an extra £50 billion while creating one million extra jobs by 2030.

(Department for Culture, Media and Sport, GOV, 2023)





> Architect



> Fine Artist



> Videographer

> Art Director

> Special Effects Designer



> Art Therapist



> Fashion Designer

> Textile Designer

Career Pathways in Art & Design



> Animator



> Interior Designer

> Product Designer

> Set Designer



> Photographer



> Graphic Designer

> Concept Artist

> Illustrator

Art & Design

Creative Practice

Extended Diploma, Level 3

Master your individual style and technique with this exciting course. You will develop a thorough understanding of creative industries by working on live client briefs and experimenting across multiple disciplines. You will study different forms of artistic expression using both traditional and contemporary methods, including fine art, sculpture, 3D design, printmaking, illustration, animation and more.

Pathways within the Creative Practice course include

- > Photography and Video
- > Fine Art, Graphics, Illustration and Animation
- > 3D Craft, Production and Interior Design
- > Fashion, Textiles and Surface Pattern

Study length

Two years

Entry requirements

Four GCSEs at grade 4 or above including English and maths and a portfolio of work for interview





Art & Design

Diploma, Level 2

Develop your practical and creative skills through various artistic mediums including printmaking, graphics, fashion, textiles, 3D design and illustration. You will discover 2D and 3D communication and explore the transformation of art through history. Alongside this you will continue to develop key practical skills from the STEM 7 programme, exploring careers in the creative industries and preparing you for study at a higher level.

Pathways within the Art & Design course

- > Graphics and Illustration
- > Creative Art and Design
- > Photography and Video

Study length

One year

Entry requirements

Four GCSEs at grade 3 or above including English and maths and a portfolio of work for interview



Beauty Therapy

Job Advertisements



1,452

Industry



The number of available jobs is
25% above the national average

Average Salary



£22,656 (2023-2024)

Good to know!

Beauty and nail salons were in the top 10 fastest-growing business types of the retail economy in 2023.

(Local Data Company and Green Street, 2023)



Career Pathways in Beauty Therapy



> Tattoo Artist



> Beauty Buyer

> Beauty Customer Adviser



> Beautician

> Beauty Therapist



> Spa Owner

> Salon Owner



> Cosmetologist

> TV & Film Makeup Artist



> Nail Technician

> Makeup Artist

> Bridal Makeup Artist



> Aesthetician

> Skincare Consultant



> Massage Therapist

Beauty Therapy

Beauty Therapy

Diploma, Level 3

Build on the knowledge and experience of beauty therapy gained at Level 2, with this Level 3 course. You'll study advanced treatments including body massage, stone therapy, Indian head massage, tanning and microdermabrasion. You will explore treatments for the face and body, and develop your knowledge of anatomy and physiology. You will also learn to excel in communication, build your confidence and solve problems, all in a commercial salon environment.

Study length

One year

Entry requirements

Beauty Therapy Level 2 and four GCSEs at grade 4 or above or the agreement to sit these qualifications alongside this course





Beauty Therapy Certificate, Level 2

This course will equip you with the skills and knowledge required to provide facial skincare, eyelash and eyebrow treatments, makeup, and manicure and pedicure treatment. You will gain an insight into working with others in the hair and beauty sector, and knowledge of health, safety and hygiene requirements.

Study length

One year

Entry requirements

No formal entry requirements; a general interest in beauty treatments is beneficial



Beauty Therapy

Beauty Therapy Certificate, Level 1

Get the perfect introduction to the hairdressing and beauty industry with this Level 1 certificate. You will gain an insight into working with others in the hairdressing and beauty sector, and knowledge of health, safety and hygiene requirements.

Study length

One year

Entry requirements

No formal entry requirements; a general interest in hairdressing and/or beauty treatments is beneficial





Business

Job Advertisements



88,328

Industry



Expected to rise by 3.4%
over the next five years

Average Salary



£30,656 (2023-2024)

Good to know!

71.3% of marketing graduates from the academic year 2020/21 went on to full time employment within 15 months of graduating.
(Prospects in association with AGCAS, 2023/24)



BRAND



Business

Business Management & Administration

T Level

This qualification offers a fantastic opportunity to learn important theoretical knowledge of how a business operates, while gaining hands-on experience in the workplace. This course has been developed for those wanting to work in management and received input from leading employers, and is designed to build the required knowledge and skills to work across a number of sectors.

During the course you will develop your knowledge and understanding of a range of subjects including finance, project and change management, building and managing teams, building business relationships and managing and implementing projects.

Study length

Two years

Entry requirements

Five GCSEs at grade 5 or above, including English and maths



T-LEVELS



Marketing

T Level

The Marketing T Level gives you a broad view of the marketing industry - areas covered include the marketing environment, sales, project management and technology. As well as learning transferable skills relevant to the sector, such as communication, colleague collaboration and research, you will also gain valuable experience working in the sector. You will select an occupational specialism, created with employers, which will allow you to develop skills in your particular area of interest.

Ideal if you want to move directly into employment within the marketing sector, this course will equip you with the knowledge and experience you need to start your marketing career. Alternatively, the T Level enables you to continue your study at university, or embark on an apprenticeship, should you wish to learn more about this exciting sector.

Study length

Two years

Entry requirements

Five GCSEs at grade 4 or above, including English and maths

BRAND

T-LEVELS

Business

Marketing

Diploma, Level 3

If you're interested in a career in marketing, this Level 3 Diploma prepares you for employment in this exciting sector. Giving you a grounding in the fundamentals of marketing, this course enables you to step into your new marketing career, or embark on further study. Topics covered include: careers in marketing; marketing principles; branding products and services; applying digital marketing and generating customer loyalty.

Study length

One year

Entry requirements

Five GCSEs at grade 4 or above, including English and maths

**BRAND**

Catering & Hospitality

Job Advertisements



51,372

Industry



Expected to rise by 3.1%
over the next five years

Average Salary



£22,720 (2023-2024)

Good to know!

Our catering and hospitality students work with RHS Garden Harlow Carr to grow their own fruit and vegetables for use in lessons and events, encouraging the use of seasonal and local food produce to assist with reducing carbon emissions.



- > Head Chef
- > Production Chef



- > Product Tester
- > Brand Manager
- > Retail Merchandiser



- > Sous Chef
- > Patisserie Chef



- > Wine Merchant
- > Product Manager

Career Pathways

in

Catering & Hospitality



- > Nutritionist
- > Environmental Manager
- > Customer Insight Manager
- > Health & Safety Manager



- > Restaurant Manager
- > Hospitality Manager
- > Manufacturing Manager

Catering & Hospitality

Hospitality & Culinary Skills

Certificate, Level 2

Start your path to a culinary career with this introductory course. You will cover all aspects of hospitality service, as you learn the fundamentals of working in this exciting industry. Within the kitchen, you will develop your talents and learn how to prepare and cook food safely, as well as covering sustainability and dietary requirements. These skills will give you an edge when entering this exciting industry.

Study length

One year

Entry requirements

Four GCSEs at grade 3 or above, preferably including English and maths





Hospitality & Culinary Skills

Diploma, Level 2

Gain classical chef training with this intense, professional course that will develop your knowledge and culinary skill. Perfect your hospitality skills in our award-winning Craft Bistro where you will gain valuable experience working under pressure. Centred around the classics, you will also have the opportunity to add your own twist and create unique dishes.

Study length

One year

Entry requirements

Four GCSEs at grade 4 or above, preferably including English and maths



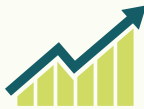
Childcare & Education

Job Advertisements



40,350

Industry



Expected to rise by 1.1%
over the next five years

Average Salary



£25,920 (2023-2024)

Good to know!

The sector provides numerous employment opportunities, with over 31,000 Ofsted-registered providers offering approximately 1.4 million childcare places.
(Savills, 2023)



> Nursery Manager



> Educational Psychologist



> Childminder
> Play Therapist

Career Pathways

in
Childcare & Education



> Midwife
> Children's Nurse



> School Teacher
> Family Support Worker



> Early Years Educator
> Children's Social Worker



Childcare & Education

Childcare & Education

T Level

Alongside a work placement, you will study the childcare and education sector in depth, exploring all aspects of child development. Learn how to support children and young people's education, including understanding and managing behaviour, working with parents, carers and wider families, and working with agencies and services. Develop a thorough understanding of safeguarding, wellbeing, equality and diversity, and health and safety so that you are confident stepping into the real world. Explore reflective practice and professional development, and learn how to observe and assess children and young people. You will also cover specialist provisions such as special educational needs and disabilities, and English as an additional language.

Study length

Two years

Entry requirements

Five GCSEs at grade 4 or above, including English, maths, and science



T-LEVELS

Construction & Joinery

Job Advertisements



33,245

Industry



Expected to rise by 2.5%
over the next five years

Average Salary



£34,752 (2023-2024)

Good to know!

The top 3 posted jobs in the UK between Jan 2023-2024 were 1) Quantity Surveyors, 2) Surveyors, 3) Labourers.
(Lightcast, 2024)





> Site Manager

> Architectural Technician

> Building Control Officer



> Health & Safety Manager

> Digital Engineering Technician



> Bricklayer

> Site Joiner

> Project Manager



> CAD Operative

> Quantity Surveyor

> Demolition Worker

Career Pathways

in

Construction & Joinery



> Furniture Maker

> Civil Engineering Technician



> Contracts Manager

> Chartered Surveyor

> Building Services Engineer

Construction & Joinery

Bricklaying

Diploma, Level 2

If you want to work as a Bricklayer in the construction sector, build your chances with this course. Learn in our Technology Centre where you have all the tools you need to construct your career. You will gain knowledge of working drawings along with the skills to build thin joint masonry, cladding and develop structures. Further your skills building solid walling, isolated and attached piers and constructing cavity walling structures.

Study length

One year

Entry requirements

Four GCSEs at grade 4 or above including English and maths





Site Carpentry

Diploma, Level 2

Build your career with this hands-on programme. You will master practical skills including first fix flooring, roofing, frames and carpentry maintenance. Learn essential aspects of carpentry and joinery, and begin your journey towards becoming a master craftsman. You'll sharpen your knowledge of health and safety within the construction industry while learning how to communicate in the workplace.

Study length

One year

Entry requirements

Four GCSEs at grade 3 or above, including English and maths or a relevant Level 1 qualification



Construction & Joinery

Construction Skills

Certificate, Level 1

This introductory course is designed to give you insight into the various industries that sit within the trades. There may also be an option to choose between joinery and brickwork, depending on intake. Key skills developed in this course transfer to a second year of study, where you will specialise in a specific skills area. You will learn the fundamentals of health and safety as well as working with others, and how to work with the specific tools, equipment and materials for your trade. The course will give you a great introduction and insight into the trades industry, developing your employability and independent thinking skills.

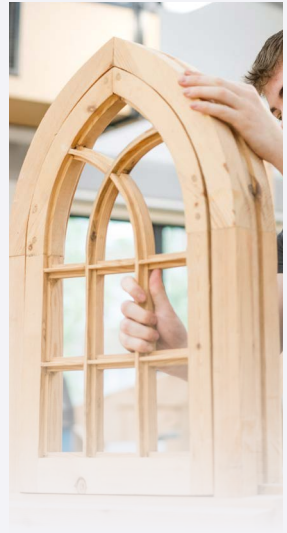
Study length

One year

Entry requirements

This introductory course has no formal entry requirements but there is an expectation of a great work ethic and a natural inclination to work practically. This programme will also include English and maths to bring your skills to the required level for returning on Level 2 or gaining an apprenticeship.





Did you know?

We're sustainability conscious.

Our curriculum includes modern house building methods to ensure that energy efficiency is considered throughout our courses



Digital & IT

Job Advertisements



17,794

Industry



Expected to rise by 3%
over the next five years

Average Salary



£39,900 (2023-2024)

Good to know!

On average, tech salaries are nearly 80% higher than salaries for non-tech jobs in the UK.

(Tech Nation, 2022)





- > Forensic Analyst
- > Helpdesk Professional
- > Applications Developer



- > Head of ICT
- > Risk Analyst
- > Network Manager

Career Pathways in Digital & IT



- > AI & Robotics
- > Data Administrator



- > Systems Analyst
- > Systems Administrator



- > ICT Technician
- > Ethical Hacker
- > Cyber Security Architect



- > Software Designer
- > Software Engineer
- > Information Scientist

Digital & IT

Digital & IT

T Level

Alongside an industry placement, your qualification will cover extensive study of digital and IT skills. You will learn how digital technologies impact businesses, the ethical and moral implications of digital technology, your legal and regulatory obligations, and practical applications to solve problems. The course also covers project management including planning digital projects and using tools for collaboration, how to use data in software design, privacy of personal data, and internet security. We explore emerging technical trends, such as Internet of Things (IoT), Artificial Intelligence (AI), Augmented Reality (AR), Blockchain and 3D printing, and teach you how to test software, hardware and data.

Study length

Two years

Entry requirements

Five GCSEs at grade 4 or above, including English, maths, and science



T-LEVELS



Esports

Diploma, Level 3

Are you passionate about competitive gaming? This Esports qualification teaches a diverse range of transferable skills where you can turn your drive for gaming into a well-established career. Esports offers a unique opportunity to study a sector that crosses over multiple subject areas such as sport, business, marketing, events, enterprise, IT and the creative industries. This qualification covers social, physical, mental and financial skills, deepening and expanding knowledge and leading to a variety of career opportunities. There is also the opportunity to be involved in the Esports Academy which competes in the British Esports Association Championships.

Study length

One year, with the option to top-up for an additional year to make an Extended Diploma

Entry requirements

A minimum of four GCSEs at grade 4 or above, including English and maths



Digital & IT

Creative Digital Media Production

Extended Diploma, Level 3

Expand and develop your creative skills with one of our two digital media options. Whether your interests lie in video or gaming, hone your craft and pursue your passion.

Pathway Options

- > **Games** - if you have a flair for design, craft your creative computer skills using industry-standard equipment and facilities. You'll work on your own 3D modelling, animation and video editing. Additionally, you'll learn about game development with programming, concept art, project planning and game environment design.
- > **Film and TV** - are you passionate about film and TV and the effects it has on wider society? Learn skills relating to film editing, documentary editing, script editing, media marketing techniques, and critical theory relating to social science. You will also create your own video content focusing on your interests.

Study length

Two years

Entry requirements

Five GCSEs at grade 4 or above, including English and maths





Creative Digital & Multimedia Production & Design

Certificate, Level 2

Gain an introduction to the exciting world of Creative Media industries. This course covers media production, games animation development and building digital spaces. Working in our high specification creative studios and computer suites, you will develop the fundamental skills found in illustration and graphic design - investigating sculpture, film, photography, green screen and media design. Learn how to respond to creative briefs and build your own professional portfolio, and get the opportunity to exhibit your work at the end of the year.

Study length

One year

Entry requirements

Four GCSEs at grade 3 or equivalent



Electrical

Job Advertisements



10,749

Industry



Expected to rise by 4.9%
over the next five years

Average Salary



£37,600 (2023-2024)

Good to know!

Demand for workers in this area is estimated
to increase by 28% from 2023 to 2028.

(Ableskills, 2024)





- > Site Manager
- > Site Supervisor
- > Estimating Manager



- > Electrician
- > Electronics Test Engineer



- > Heating Engineer
- > Domestic Installer
- > Commercial Installer

Career Pathways in Electrical



- > Repair Technician
- > Renewable Energy Electrician



- > Building Services Engineer
- > Electrical Projects Manager
- > Telecommunications Engineer



- > Electronics Engineer
- > Electronics Assembly
- > Sound & Lighting Engineer

Electrical

Electrical Installation

Diploma, Level 2

This course has been designed to deliver a high level of occupational skills and allow you to progress onto an apprenticeship programme or into employment.

Level 2 is a step towards becoming a competent electrician, helping you gain an understanding of the skills required within the electrotechnical sector.

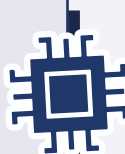
You will cover compulsory aspects such as scientific principles, installation of wiring systems and enclosures, and electrical installations technology.

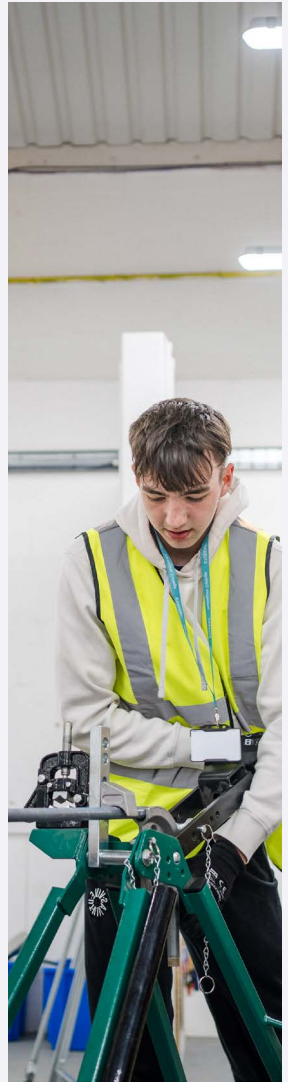
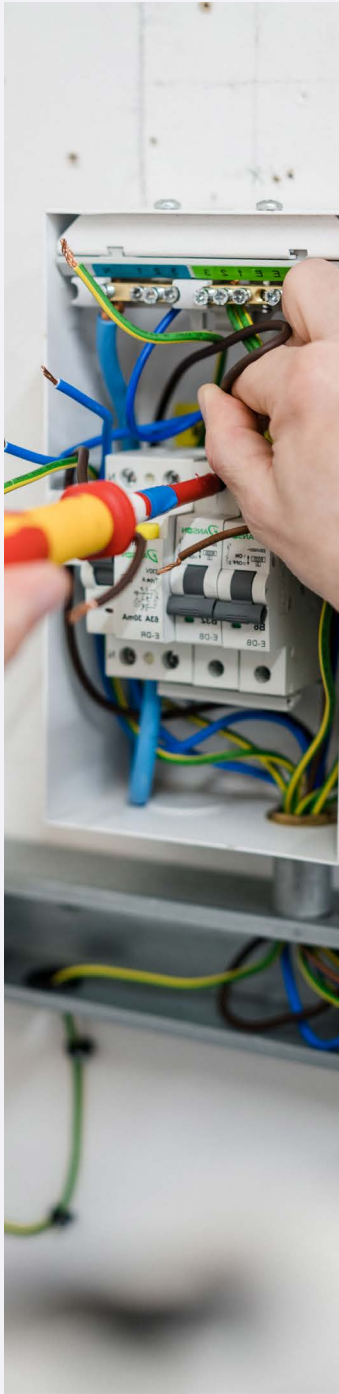
Study length

One year

Entry requirements

Four GCSEs at grade 4, including English and maths





English for Speakers of Other Languages (ESOL)

English for Speakers of Other Languages (ESOL) Entry to Level 2

Improve your English for school, work and everyday life on this friendly and educational course. You will perfect your everyday English, working on your speaking, listening, reading and writing skills. You will study with people from all backgrounds and will receive help and support from friendly tutors. This is a great way to use English to reach your personal goals.

Study length

Full-time and part-time learning available

Entry requirements

There are no entry requirements for this course



Foundation Learning

Preparation For Work

Entry Level

This course gives you the skills to find work in the future. This includes developing your English, maths and communication skills, as well as learning how to work as part of a team, solve problems and use computers for research. The course also supports you to become more independent, by teaching you budgeting and cooking, for example. This course is not geared towards a specific job but you will be encouraged to follow your interests. There will be opportunities to undertake work placements and supported internships so that you have experience of the workplace.

Study length

Two years

Entry requirements

There are no entry requirements for this course

What's next?

Progress from work related activity into supported internships, and work experience leading to sustained employment in an area you are interested in. The intention of this course is that you progress into full time employment or higher level study linked to job specific skills.



Foundation Learning

Personal & Social Development

Certificate, Level 1

This course allows you to experience aspects of our full-time courses without committing to one specific subject. You will develop your English and maths skills, work on your social and personal development, and study different topics to help you choose what you'd like to specialise in. This course is ideal if you'd like to gain new skills whilst exploring different career and study options. You will also get to experience the student activities and college life Harrogate College has to offer.

Study length

One year

Entry requirements

There are no entry requirements for this course





Employability and Enterprise

Award, Level 2

This engaging course will see you develop your personal and employability skills through a series of exciting projects, volunteering and activities. If you're aiming to start work, or want to continue studying, this course will help you achieve your goals. Build your confidence as you grow your skill set and gain valuable experience of work, through participation in projects and activities.

Study length

One year

Entry requirements

Three GCSEs at grade 3 or equivalent

What's next?

If you want to pursue further study, successful completion of this course will allow you to progress to a Level 3 course. Alternatively you could embark on an apprenticeship, or enter the world of work.



Foundation Learning

Project Search Internship Programme Internship

Run in conjunction with Harrogate and District NHS Foundation Trust, DFN Project Search and HFT.

The programme follows the pattern of the academic year, starting in September and running till mid-July. You will have the usual college holidays but unlike most of our courses which span 3-4 days, the Supported Internship runs Monday to Friday 9am-4pm. The programme generally includes three different rotations within the hospital.

A typical day starts with a general catch up and some work on employability skills – this is led by the college's Coordinator and supported by a Job Coach. You will then go to work in your allocated department from 10am and finish at 3.30pm and then go back to your base room for a daily debrief with the Job Coach and college Coordinator. You would normally be placed in a different department to other interns so you feel like part of that team rather than a group of college students on a work placement.

Study length

One year

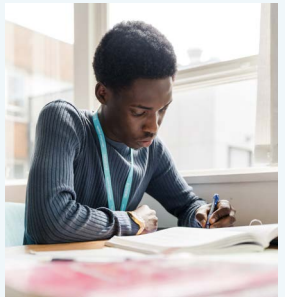
Entry requirements

Applicants must be 18-24 years old and have an EHCP

What's next?

Progress into employment at a Harrogate & District NHS FT Hospital





Hairdressing

Job Advertisements



2,328

Industry



The number of available jobs is
31% above the national average

Average Salary



£23,744 (2023-2024)

Good to know!

Rates of hair and beauty business ownership are almost
three times higher than across the economy.

(British Beauty Council, 2023)

x3

Career Pathways in Hairdressing



- > TV & Film Stylist
- > Wigmaker/Fitter
- > Events & Bridal Stylist



- > NVQ Assessor
- > External Verifier
- > Hairdressing Tutor



- > Salon Owner
- > Salon Manager



- > Barber
- > Freelance Stylist



- > Brand Manager
- > Colour Technician



- > Senior Stylist
- > On-Location Stylist



- > Salon Training Manager
- > Business Development Manager

Hairdressing

Hairdressing

Diploma, Level 3

Develop your skills, grow in confidence and enhance your independence. You will be guided by industry professionals and have the opportunity to practise on your own models within the industry-standard salon. You will build on skills that you acquired during the Level 2 qualification and develop your talent so that you are able to not only cut, style and colour but also correct and train hair, so that you can work towards developing your own long term client base.

Study length

One year

Entry requirements

Four GCSEs at grade 4 or above, successful completion of Hairdressing Diploma Level 2 and regular work experience within a hair salon





Hairdressing

Diploma, Level 2

Working in our professional salon, you will build on your knowledge and grow your confidence, mastering skills such as the complexities of colouring. You will take ownership of your own clients, arranging patch-tests, carrying out treatments and providing aftercare and advice. You will be required to work under pressure and produce results to a high standard - but also gain the satisfaction that comes hand in hand with a job in the industry.

Study length

Two years

Entry requirements

English and maths GCSEs at grade 4 or above or the agreement to sit these qualifications alongside this course



Hairdressing

Hairdressing

Certificate, Level 2

This certificate in Hairdressing equips you with the skills and knowledge you need to start your journey into the creative and rewarding world of hairdressing. Perfect for beginners, the course covers fundamentals from consultations to cutting, shampooing to blow-drying. Train in our professional salon, learn from our industry-experts and gain the necessary foundation to progress onto our Level 2 Diploma.

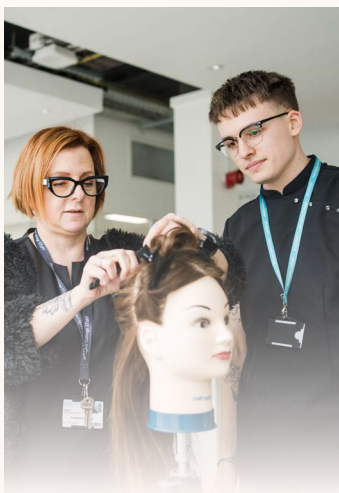
Study length

One year

Entry requirements

English and maths GCSEs at grade 4 or above or the agreement to sit these qualifications alongside this course

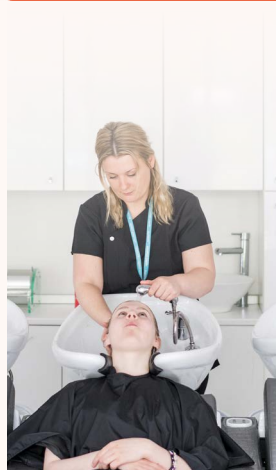




Did you know?

We're sustainability conscious.

- > We recycle all our waste products
- > All our products - tissues, cotton wool, cotton tips are sustainably resourced
- > Our general waste goes towards producing renewable energy
- > We research all our hair and beauty product suppliers - looking into their sustainability policies and their carbon footprint - before deciding whether to purchase from them



Health & Social Care

Job Advertisements



54,529

Industry



Expected to rise by 1.9%
over the next five years

Average Salary



£28,736 (2023-2024)

Good to know!

The National Health Service (NHS) is the largest employer
in the sector employing 1.4 million people.

(Prospects, 2024)





- > Nurse Practitioner
- > Pharmacy Technician
- > Clinical Support Worker



- > Optometrist
- > Practice Manager
- > Health Service Manager



- > Podiatrist
- > Radiographer
- > Physiotherapist



- > Social Worker

Career Pathways

in

Health & Social Care



- > Care Home Manager
- > Clinical Psychologist
- > Therapy Support Worker



- > Counsellor
- > Medical Secretary
- > Employability Adviser

Health & Social Care

Health

T Level

Alongside your industry placement, you will develop a general understanding of health and science. The T Level will cover core science concepts - including the structure of cells, tissues and large molecules, genetics, microbiology and immunology - knowledge of both human anatomy and physiology, and of diseases and disorders, and infection prevention and control. You will learn the principles of good scientific and clinical practice, including health, safety and environment regulation, and how to manage information and data. You will develop the skills needed to provide person-centred care and to support the health and wellbeing of patients. In addition to the core content, each student must choose one of the following specialisms: supporting the adult nursing team or supporting the mental health team.

Study length

Two years

Entry requirements

Five GCSEs at grade 4 or above, including English, maths, and science



[Click here to learn more about T Levels, and to listen to our podcast episodes about recent T Level placements.](#)

T-LEVELS



Health & Social Care Certificate, Level 2

Begin your career in care with this course. Explore the core subjects required to provide a high standard of care to service users, including equality and diversity, safeguarding and protection. You will develop a thorough understanding of human growth and development, and undertake valuable work experience within the industry.

Study length

One year

Entry requirements

Five GCSEs at grade 3 or above, including English and maths



Motor Vehicle

Job Advertisements



6,219

Industry



Expected to rise by 6.9%
over the next five years

Average Salary



£34,496 (2023-2024)

Good to know

We're seeing green!

We've purchased electric and hybrid vehicles so we can ensure our teaching keeps up with the latest developments in vehicle technology.





- > Estimator
- > Workshop Manager
- > Vehicle MET Technician



- > Delivery Driver
- > Business Owner
- > Car Salesperson
- > Stock Controller

Career Pathways

in

Motor Vehicle



- > Paint Technician
- > Driving Instructor
- > Body Shop Manager
- > HGV Driving Assessor



- > Welder
- > Motor Vehicle Mechanic



- > MOT Tester
- > Auto Electrician
- > Auto Care Technician

Motor Vehicle

Motor Vehicle

Level 2

An intense course that will build your skills, develop your knowledge and understanding of motor vehicles. You will be trained to work safely and produce results to a high standard - gaining the experience and knowledge to self-test and fault find independently. You will have the opportunity to work with real cars in a realistic garage, test for faults, run diagnostics and become familiar with modern technologies. You will also gain exposure to the industry and get the chance to work with welding equipment.

Study length

One year

Entry requirements

There are no formal entry requirements for this course, however an interest in cars and mechanics is desirable, and GCSEs would be beneficial. If you do not have GCSEs in English and maths at grade 4 or above, you will take this alongside your course. Each applicant will be individually assessed.





Motor Vehicle Level 1

Motor Vehicle Level 1 is a good starting point for anyone who is interested in vehicles. Over the year you will work on vehicles in the college workshop to develop and fine-tune your practical skills, as well as developing your theoretical knowledge and writing reports on the work you have completed. You will be taught by skilled professionals and learn how to use industry-standard tools and equipment to carry out your own maintenance and repair, ready to progress further to either Level 2 or an apprenticeship.

Study length

One year

Entry requirements

There are no entry requirements for this course, however an interest in cars and mechanics is desirable. If you do not have GCSEs in English and maths at grade 4 or above, you will take this alongside your course.



Science

Job Advertisements



4,203

Industry



Expected to rise by 1.1%
over the next five years

Average Salary



£31,808 (2023-2024)

Good to know!

In 2023, the UK government announced a new
£1 billion investment in the life sciences sector.
(MHA, 2024)



Career Pathways in Science



- > Pharmacologist
- > Research Scientist



- > Food Scientist
- > Chemical Engineer



- > Forensic Scientist
- > University Lecturer



- > Biochemist
- > Biotechnologist



- > Ecologist
- > Conservation Manager



- > Toxicologist
- > Microbiologist



- > Environmental Scientist
- > Environmental Consultant



- > Hydrologist
- > Renewable Energy Engineer

Science

Applied Science

Extended Diploma, Level 3

Become a science specialist with this Applied Science course: combine hands-on learning with academic theory and critical thinking. You'll gain knowledge in physiology, diseases, genetics and astronomy. You will explore how to put your theories into practice in practical laboratories where you'll learn about biology, chemistry and physics. Additionally, you'll analyse and identify contemporary issues in science.

Study length

Two years

Entry requirements

Five GCSEs at grade 4 or above, including English Language and maths





Applied Science

Award, Level 2

Looking for a career in science? Start with our Level 2 programme, which will give the grounding in the principles of science, required to pursue further study in this exciting field. Covering chemistry, physics and biology, you will learn about the environment, energy, planet Earth and conduct your own investigations, developing your hypotheses in our state-of-the-art laboratories.

Study length

One year

Entry requirements

Four GCSEs at grade 4 including English and maths, or equivalent



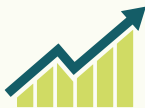
Sport

Job Advertisements



7,076

Industry



Expected to rise by 2.9%
over the next five years

Average Salary



£30,272 (2023-2024)

Good to know!

71% of experts expect women's sports revenues to grow
by more than 15% in the next 3 to 5 years.

(PWC, 2024)





- > PE Teacher
- > Personal Trainer
- > Sports Development Officer



- > Lifeguard
- > Gym Manager
- > Sports Marketing Officer

Career Pathways in Sport



- > Nutritionist
- > Event Manager
- > Sports & Exercise Scientist



- > Sports Scientist
- > Physiotherapist
- > Sports Therapist
- > Sports Psychologist



- > Grounds Person
- > Sports Journalist
- > Leisure Centre Manager

Sport

Sport, Fitness & Personal Training Diploma, Level 3

This qualification allows you to develop your skills in fitness and personal training, while opening up a world of opportunities in the sports industry. Learn about self-employment, fitness testing, nutrition and injuries. Gain knowledge of how to train, strengthen and nurture the body for optimum performance, as well as developing personal trainer skills. You will even have the opportunity to play competitively in the regional and national college sports network - putting your skills into practice as you represent the college.

Study length

One year

Entry requirements

Four GCSEs at grade 4 or above, including English and maths





Gym Instructing Certificate, Level 2

If sport and fitness is what drives you, this Level 2 course enables you to use your passion to motivate others, as a gym instructor. Combining practical and theoretical units you will develop the skills employers are looking for, as you build your knowledge and expertise. Progress from this course to our Sport Fitness & Personal Training Level 3 Diploma, or into employment within the sport and fitness industry.

Study length

One year

Entry requirements

Four GCSEs at grade 3 or above including English or maths



Uniformed Protective Services

Job Advertisements



5,001

Industry



The number of available jobs is 7% above the national average

Average Salary



£29,760 (2023-2024)

Good to know!

Between January 2023 and January 2024, the top 4 companies hiring in this sector were 1) Ministry of Justice, 2) HM Prison and Probation Service, 3) NHS, and 4) Ministry of Defence.

(Lightcast, 2024)





- > Dog Handler
- > Police Officer
- > Community Safety Officer



- > Data Analyst
- > Prison Officer
- > Border Force Officer



- > RAF Officer
- > Army Officer
- > Naval Officer

Career Pathways

in

Uniformed Protective Services



- > Detective
- > Intelligence Officer
- > Forensic Psychologist



- > Paramedic
- > Firefighter
- > Site Security Manager
- > Emergency Call Handler

Uniformed Protective Services

Uniformed Protective Services

Extended Diploma, Level 1

Discover what you're truly made of when you train for the Uniformed Protective Services.

This two year course will prepare you for the police, fire and emergency services or the armed forces, pushing your endurance and comfort levels through exciting and challenging activities. From wall climbing to caving and canoeing, criminology to responding to emergency incidents, you will satisfy your love for adventure, duty and justice as you gain valuable skills required for specialist and elite units.

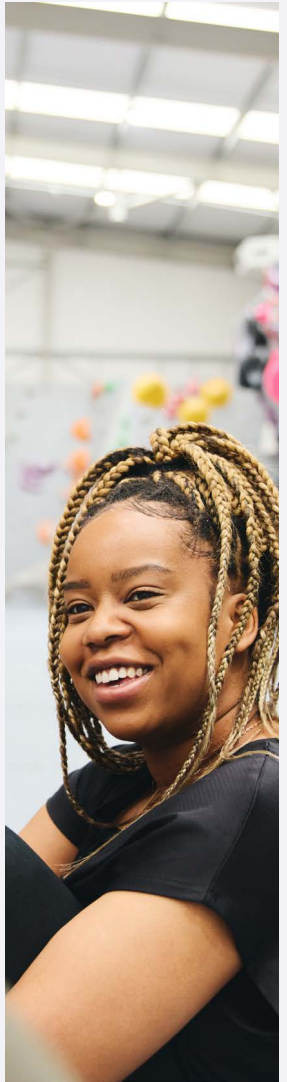
Study length

Two years

Entry requirements

GCSEs at grade 4 or above, including English and maths





Adult Learning at Harrogate College

Looking to learn more?

With us you can tap into your talents with a leisure course, go further in your career with one of our professional courses or start something new with our training programmes.

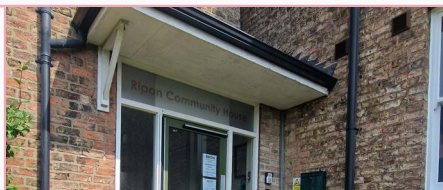
Whether you're ready for a new job, want to progress in your career or just want to learn something new for fun, we have a range of courses to help you enhance your learning, evolve your skills and expand your horizon. With part-time and online study options, our courses can fit around your schedule - and

no matter how you choose to study, you're guaranteed a supportive, encouraging teacher who will help you achieve your goals. Studying could be more affordable than you imagined - depending on your financial circumstances you could be entitled to the following:


- > Free courses
- > Financial support with childcare whilst you are in college
- > Travel card
- > Meal vouchers

We're now in Ripon

Find us at Ripon Community House, Ripon HG4 1LE



Follow us on Facebook:

 **Adult Learning at Harrogate College**




Find out more about our
adult courses by clicking here
or call us on 01423 879 466

[Click here](#)

Notes

[illegible]



Call: 01423 879 466

Email: contact@harrogate-college.ac.uk

Visit: Harrogate College
Hornbeam Park Ave
Harrogate
HG2 8QT

Disclaimer: The information contained in this guide is accurate at the time of printing, but changes may take place. Some variation may occur as a result of circumstances beyond our control. Please see our website www.harrogate-college.ac.uk for the most up-to-date information regarding our courses and support for students.

Open Events

2024

Wednesday 23 October 5.30-7pm

Wednesday 20 November (Taster Event) 5.30-7pm

2025

Tuesday 11 February 5.30-7pm

Wednesday 23 April 5.30-7pm

Wednesday 25 June 5.30-7pm



Technical Courses | T Levels | Apprenticeships

For more information and to book
please visit our website:

harrogate-college.ac.uk/events

Click here

