

# HARROGATE COLLEGE

Prospectus 2023

**For students who want more.**

Full-time courses, T Levels & Apprenticeships



**At Harrogate College, we are committed to providing an inclusive environment that celebrates individuality and ambition.**



We want students to reach their full potential and one way we aim to deliver this is through our employer-led curriculum. We work closely with businesses and universities to stay informed about the skills graduates need for opportunities post-college. This insight is transferred to our courses, where students learn both specialised and transferable skills for university, today's job market and later life.

We believe students should feel motivated as they learn, which is why we've invested in our facilities to reflect industry standards and heighten students' learning experience. Our multimedia rooms and art studios, science laboratories and electrical workshops give students access to state-of-the-art equipment; our Craft Bistro features well-equipped industrial kitchens that train students for the excitement of professional cookery and hospitality; and our beauty salons let students experience real, working environments before entering the world of work.

Students become part of a friendly, diverse community when they join us and are encouraged to balance academic life with social activities. From our Duke of Edinburgh Award Scheme group to the LGBTQ+ Society, our extra-curricular activities help students make friends, build independence and enrich their time at college.

**Danny Wild**  
Principal of Harrogate College

**'Good' with 'Outstanding' features.**



# Our Values

We believe in guiding students towards their goals, equipping them with the confidence and strength of mind for future endeavours.

**Progressive:** Harrogate College works to prepare people and places for the future

**Nurturing:** Harrogate College encourages everyone to reach their potential in a safe and caring environment

**Inclusive:** Harrogate College welcomes everyone

---







# Contents

Our Values	4
Open Events	8
How to Apply	10
Your Route	12
Our Facilities	14
ilearn	28
Our Support Services	32
Safeguarding and Wellbeing	36
Student Life	38
STEM	40
Apprenticeships	44
T Levels	48
 <b>Science</b>	
Health Science Professions (Level 3)	52
Applied Science (Level 3)	53
 <b>Digital &amp; IT</b>	
Digital and IT (T Level)	56
Creative Media Production (Level 3)	57
Creative Media Production (Level 2)	58
 <b>Art &amp; Design</b>	
Art and Design (Level 3/4)	62
Creative Practice (Level 3)	63
Art and Design (Level 2)	64
 <b>Hairdressing</b>	
Hairdressing (Level 3)	68
Hairdressing (Level 2)	69
 <b>Beauty Therapy</b>	
Beauty Therapy Treatments (Level 3)	72
Beauty Therapy Specialist Treatments (Level 2)	73
Beauty Therapy (Level 1)	74
 <b>Health &amp; Social Care</b>	
Education and Childcare (T Level)	78
Healthcare (T Level)	79
Health & Social Care (Level 3)	80
Childcare and Education (Level 3)	81
Health & Social Care (Level 2)	82

>	<b>Business</b>	
	Finance (T Level)	86
	Business (Level 3)	87
	Marketing (Level 3)	88
	Business (Level 2)	89
>	<b>Catering &amp; Hospitality</b>	
	Hospitality Services (Level 2)	92
	Professional Cookery (Level 2)	93
>	<b>Construction &amp; Joinery</b>	
	Building Services Engineering for Construction (T Level)	96
	Bricklaying (Level 2)	97
	Site Carpentry (Level 2)	98
	Painting & Decorating (Level 2)	99
	Construction Skills (Multiskills) (Level 1)	100
>	<b>Electrical</b>	
	Electrical Installations (Level 3)	104
	Electrical Installations (Level 2)	105
	Electrical Installations (Level 1)	106
>	<b>Motor Vehicle</b>	
	Motor Vehicle (Level 2)	110
	Motor Vehicle (Level 1)	111
>	<b>Sport</b>	
	Sport, Fitness and Personal Training (Level 3)	114
	Sports Coaching & Development (Level 3)	115
	Gym Instructing (Level 2)	116
>	<b>Uniformed Public Services</b>	
	Uniformed Public Services (Level 3)	120
>	<b>ESOL</b>	
	English Speakers of Other Languages (ESOL) (Level 2)	123
>	<b>Foundation Learning</b>	
	Enterprise & Employability (Level 1)	125

# Open Events

**Our open events give you the opportunity to discover more about our courses, facilities and college life. We run regular open days at our campus throughout the year – see below for the latest dates and times.**

---

## **2022**

**5 October 4–7pm**

**9 November 4–7pm**

## **2023**

**8 February 4–7pm**

**26 April 4–7pm**

**28 June 4–7pm**

For more details and our latest event calendar, please visit  
[harrogate-college.ac.uk](https://harrogate-college.ac.uk)







# How to Apply

Ready to begin your educational journey? Here's how.

---



For more information  
visit [harrogate-college.ac.uk](http://harrogate-college.ac.uk)





1.

### **Search for a course**

Explore our prospectus or find a course online at [harrogate-college.ac.uk](http://harrogate-college.ac.uk)

---

2.

### **Submit an application**

Fill in our online application form at [harrogate-college.ac.uk](http://harrogate-college.ac.uk)  
or call us on 01423 879 466

---

3.

### **Open days**

Discover more at one of our open days. Get a feel for our campus, facilities and student life – and chat to your future tutors.

---

4.

### **Interview with us**

Attend an interview, meet the team and make sure your course is right for you.

---

5.

### **Enrolment**

Once you've accepted your offer, you can book an enrolment slot via email. We'll then send you an information pack.

---

6.

### **You're all set for your course**

We look forward to welcoming you!

# Your Route

**We understand no two journeys are the same. That's why our flexible progression paths make your ambitions easier to achieve.**

---

**Our courses and apprenticeships let you advance through different academic levels, whilst choosing whether to continue your studies, progress to university or enter employment.**

## **Our Levels**

Level 7 = equivalent to Master's degree

Level 6 = equivalent to third year of university degree

Level 5 = equivalent to second year of university degree

Level 4 = equivalent to first year of university degree

Level 3 = A level equivalent & BTEC courses

Level 2 = GCSE level

Level 1 = entry level

For more information on specific routes,  
speak to a friendly member of our team,  
email [contact@harrogate-college.ac.uk](mailto:contact@harrogate-college.ac.uk)

## ^ **Degree**

University Degree Study or  
Apprenticeship Degree

## ^ **Level 3**

A Level / T Level / BTEC or  
Level 3 Apprenticeship

## ^ **Level 2**

GCSE Level or Level 2 Apprenticeship

## ^ **Level 1**

Alternative pathway opportunities to suit  
individual student needs, including full-time  
study programmes and apprenticeships

# Our Facilities

**Cutting-edge workspaces and equipment to help you perfect your practical skills.**

---

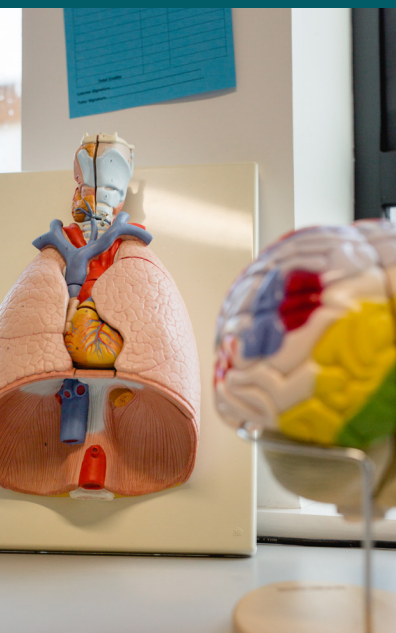
## Science laboratories

Our **cutting-edge** laboratories make scientific study come alive and scientific breakthroughs a possibility for all our students. These **interactive environments** feature the latest technology, multiple workbenches and quality equipment – increasing the efficacy of results and allowing for team collaboration. Our **industry-standard** storerooms provide a safe and secure space to house chemicals and additional equipment. Our expert tutors manage the laboratories and use them to teach students how to carry out procedures, applications and research in a realistic setting – easing their transition into the workplace.





**Science  
laboratories**



## Technology centre

Home to electrical studies, motor vehicle, joinery, painting and decorating, and more – our **innovative technology centre** is where manual skills and creativity come together. Students have access to **state-of-the-art** equipment including a working garage, welding bays, a joinery suite and electrical workshop. Plus, our construction yard lets learners develop their skills in a safe **industrial setting**.

---







**Electrical and motor  
vehicle facilities**



## IT suite and creative studios

Here is where you will find our IT suite, complete with PCs, iMacs and **professional software** for specialisms like animation and games development. Students can showcase their originality in our photography, art and recording studios too – **designed to inspire** with retro-styled interiors.

---









**Photography  
darkroom**





**Art studio**

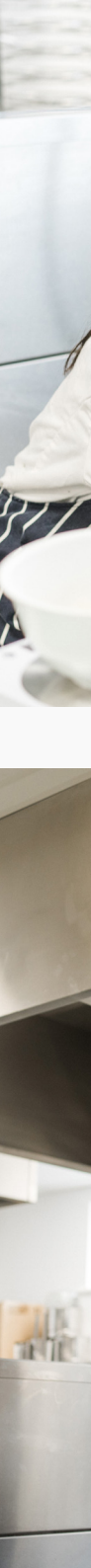


**Photography  
studio**

# CRAFT

>>>>>	BISTRO
-------	--------

Students cook up a world of treats at our bistro, using a **modern production kitchen**, equipment and training bays to develop their culinary flair. Open to students, staff and the public, it offers a contemporary dining experience with flavoursome, freshly prepared dishes. Training from **industry chefs** provides students with skills and knowledge for their next professional ventures.







**Training  
kitchens**

# CRAFT

## >>>>> SALON

Our hairdressing courses allow you to update existing skills or take the first steps towards an exciting career. You will learn from teachers offering a **breadth of industrial experience** and study in large hair and beauty salons equipped to industry standards.





**Hair salon**

## Active Learning Zone

Our Active Learning Zone provides you with a quiet area to study, read and regroup in between classes. With dedicated computers, accessible spaces for individual work and a designated area for collaborative working, this **newly refurbished space** is where you can carry out research, access **learning materials** and get assistance from our support staff.

---










# ilearn

ilearn is a service designed to support individual students and help them achieve their goals, no matter what these may be. ilearn provides a service bespoke to the individual student; this can be via a one-off appointment or at a regular meeting, depending on the need of the individual.

---





ilearn operates through four strands. Underpinning each strand is the individual student – this is not a one-size-fits-all service.

The four ways we help students achieve are:

- ilearn hubs
- 1:1 support
- In-class sessions
- Enrichment

The service is open to all students, as well as to staff who can refer a student they have academic concerns about.



## **ilearn hubs**

Our ilearn hubs are the ideal space for independent learning, quiet reading or having a 1:1 with a tutor. With access to over 20,000 ebooks as well as novels, graphic novels and learning resources, the hubs are a perfect place to find inspiration. Staffed by study support officers, there's a friendly face on hand to help with any queries.

## **1:1 support**

Our ilearn team are here to help. The focus is on you as an individual and the support service is bespoke to your needs. Any student can request a private chat with the ilearn team, as can a member of staff who has a concern about an individual. This is your time and you can discuss the area you need help with. Together we will work out the key areas for you to focus on and we are there with guidance, supportive tasks and advice on how you can overcome the particular challenge you are facing.





### **In-class sessions**

Life isn't just about what you learn on your courses, which is why we work closely with teaching staff to deliver lessons that will build your confidence and prepare you for life beyond further education. Using different learning techniques such as games, discussion and activities, topics are presented in a way to help you grow as an independent learner. Sessions are delivered at the request of teaching staff and can be followed up by 1:1 tutorials for any students teaching staff feel need them.

### **Enrichment**

As well as offering 1:1 support and delivering workshops, we encourage learning by running regular competitions and activities. These competitions are run outside of curriculum and are open to all. Whether it's a reading challenge, poetry competition or pixel art competition, there's an opportunity for everyone to take part. Along with running competitions we also feature on the enrichment timetable and deliver study skills sessions, covering important skills from research to referencing. You will see us at many college events and we even run our own summer camp, SkillsFest.



# Our Support Services

Whatever your concerns, we're here to make your time with us stress free. Our support services can help with a wide range of issues – from academic and financial matters, to personal circumstances.

---



## Finance

Don't let financial worries stop you from applying. We may be able to provide support with costs in areas including travel, meals, childcare, equipment, course kit, and residential and educational visits, depending on your eligibility.

For more details, visit  
[harrogate-college.ac.uk/financial-help](https://harrogate-college.ac.uk/financial-help)  
or call us on  
01423 879 466 – option 6

## Wellbeing and mental health

We're dedicated to our students' wellbeing and staff across the college can listen, advise and help explore different options. All students have access to free counselling support, while our Student Life team offer drop-ins, and promote mental health and wellbeing through extra-curricular activities. Students can also speak to their tutors or dedicated pastoral and attendance lead.

## Careers support

Whether it's more education, an apprenticeship or work, when it comes to next steps, there's a lot to think about.

Our impartial careers advice service can help you plan your future and work towards your goals. Students have opportunities to connect with employers, develop their employability skills, gain work experience and plan their next steps.

**You can also book a 1:1 appointment with our career adviser to:**

- Understand your options and the labour market
- Identify your strengths and interests
- Get help with CVs, applications, personal statements and interview preparation
- Plan and manage your progression.

If you're a student or a parent/carer, please speak to your tutor about an appointment or email [studentadvice@harrogate.ac.uk](mailto:studentadvice@harrogate.ac.uk)



### **Special Educational Needs and Disability (SEND)**

If you're a SEND student requiring specialist support, we can help in many ways. Our friendly team is on hand to ensure everyone has a positive college experience and their needs are supported.

Below are some of the ways we can help:

#### **Quality First Teaching (QFT) support:**

- In-class differentiation, including smaller tasks and visual handouts
- Referrals to Child and Adolescent Mental Health Service (CAMHS), careers, mental health and wellbeing services
- Risk assessments
- Medical storage and access arrangements.





### **Targeted Teaching support:**

- Small group work
- Exam access arrangements
- Independent time out of class
- Aids and adaptations, including adjustable tables and chairs
- Personal care.

Students also have access to our 'Oasis Room' – a safe space to address times of stress, crisis, sensory overload, mental health issues or even periods of sudden change.

Support is assessed on an individual basis and varies depending on the person's needs, and/or their Education Health and Care Plan (EHCP). Once assessed, a personalised support plan will be created and only shared with others on a 'need-to-know' basis.

To arrange SEND support, contact  
[SENDsupport@harrogate.ac.uk](mailto:SENDsupport@harrogate.ac.uk)

# Safeguarding and Wellbeing

**It's okay to need some extra support...  
Exam stress? Worried about your wellbeing?  
We can help. We work hard to ensure your  
college experience is the best it can be.**

---

## **Mental health and wellbeing support**

It's always good to talk. Our students can access a team of counsellors and mental health officers, and we have dedicated pastoral staff who can refer you to support services. If you are worried about someone else, our Safeguarding team is also available for support and advice. Our Oasis Room is a safe space to calm down if you have an EHCP or autism and are experiencing anxiety, stress or sensory overload.

## **Academic support**

You will receive academic support from your teachers and coaching tutors. You can also contact our ilearn team for skills training, 1:1 advice, workshops or engaging learning materials. Or visit our Independent Learning Zones to access a range of resources such as books, Google Chromebooks, CDs and DVDs.

Additionally, you can take part in exam preparation sessions.

## **Safeguarding**

We are committed to making sure all students and staff are protected from harm. All staff are trained in safeguarding and child protection, and our dedicated Safeguarding team is on hand for advice and support. Don't stay silent, we are here for you.

## **Prevent**

We take terrorism seriously, so we closely follow the Prevent scheme outlined by the government. We aim to prevent people from being drawn into all forms of extremism by educating and raising awareness of issues that could endanger or cause harm.

## **Restorative Practice (RP)**

All staff at Harrogate College are trained to follow a restorative approach. Restorative Practice is a process based around the power of communication. It looks at repairing harm, building resilience and connections, developing relationships and understanding the power of communication.

## **Equality, Diversity and Inclusion (EDI)**

We are proud to be Investors in Diversity. We aim to create an inclusive learning environment that celebrates all differences and challenges discrimination. We want everyone to feel able to fully participate in college life and achieve their full potential.

# Student Life

**Make the most of your time at college with our extra-curricular activities.**

**With lots to choose from, there's definitely something for everyone.**

---

A great college experience isn't only about your qualifications. Our Student Life activities help you learn new things, connect with similar people and develop hobbies. Involvement in extra-curricular activities not only helps you socially, it also allows you to develop valuable skill sets. As a college, we are committed to STEM 7 – and Student Life activities and societies provide opportunities for you to develop these skills further.

**We're always looking for new suggestions, so if there's a hobby you'd like to pursue, we can support you to do this.**

**Our wide range of groups and societies include:**

- Board Games
- LGBTQ+ Society
- Social Action Groups
- Environmental Champions
- Mental Health Champions
- Arts and Crafts
- Brew and Chat Drop-ins

### **Student events include:**

- Mental Health Week Carnival
- Black History Month
- Garden Action Days
- Careers Fair
- Green Month
- Refugee Week

### **The Students' Union**

All students become automatic members of our Students' Union – allowing everyone to have a say in college life. We also run a Student Voice system where representatives from each class feed back to senior college members. Feedback reflects all aspects of college life – ensuring it is tailored towards your needs.

### **Get involved**

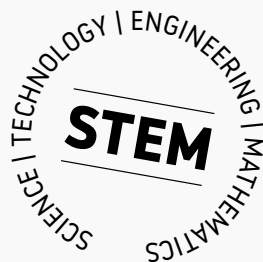
All students have the opportunity to develop leadership skills by becoming a class representative, wellbeing ambassador or 'I'm in Green' champion. Taking an active role will help you build new friendships and support the wider student community.

Why not run for Students' Union President? This paid position lets you represent your peers, whilst developing skills that make your university personal statement and CV stand out.

You can also volunteer on the Students' Union Committee and represent fellow students on topics such as mental health, equality and diversity, sports and societies, and education. Volunteering will help you gain valuable experience in a leadership role – perfect for impressing future employers and universities.

Ready to make college life an experience to remember?  
Sign up to an activity at [harrogate-college.ac.uk/student-life-support](https://harrogate-college.ac.uk/student-life-support)

# STEM



**STEM refers to science, technology, engineering and maths – four academic disciplines rapidly changing careers and industries. Not only are these exciting fields to work in, the impact of today’s science and digital spheres mean STEM careers are more accessible than ever before.**

---

**Studying a STEM course will allow you to progress on to a range of jobs in:**

- Software Development
- Health
- Data Security
- Engineering
- Motor Vehicle
- Laboratories
- Renewable Energy and Environment
- Psychology
- Games Development
- Computer Programming
- Medical Science
- Actuary
- Conservation
- Artificial Intelligence

As a college, we are committed to STEM 7. These skills are embedded across our curriculum, as well as in your Student Life experience (see page 38).







**STEM skills make you very employable – they boost your creative and problem-solving abilities, and even help you analyse information more effectively. We call this set of skills the STEM 7:**

1.  Creative thinking
2.  Problem solving
3.  Communication
4.  Collaborative working
5.  Intellectual curiosity
6.  Flexibility
7.  Data-driven decision-making

We offer a range of science, technology, engineering and maths courses to help you enter the world of STEM – all designed around abilities employers actually look for. They're available at school leaver, intermediate and higher education levels – taking you one step closer to securing your dream role.

# Apprenticeships

Apprenticeships are a form of vocational training where you work and learn at the same time. As the largest apprenticeship provider in the Harrogate district, our offer reflects employer demand across North Yorkshire.

---



Apprenticeships are training programmes blending academic study with paid work. Because they're designed with employer input, you learn vital skills as you work towards a nationally recognised qualification.

Being an apprentice means you're employed from the word 'go' – receiving a wage and support from a company committed to your development. Your training provides first-hand industry knowledge, allows you to progress to university and can take place at college or your workplace.

**Apprentices at Harrogate College benefit from:**

- Excellent training at a leading vocational college
- A competitive wage and supportive employer
- Real experience and understanding of your industry
- Progression to university (optional)
- A nationally recognised qualification
- Better wages long term
- Same access to college facilities as other students.



**See our full range  
of offerings:**





## Types of apprenticeships

### > Intermediate

Usually allocated for junior roles or anyone new to an industry, these apprenticeships teach key skills and knowledge for your chosen career path.

### > Advanced

This is where you specialise in your sector and build on existing knowledge. Advanced apprenticeships are suitable for those who have previously completed an apprenticeship or been in a job role for some time.

### > Higher

Ideal for anyone in a senior role who wants to develop their skills and progress further. These apprenticeships are equivalent to completing a foundation degree or Higher National Diploma (HND).

### > Degree/Master's degree

Become a specialist in your field or hold a senior position within a company. These apprenticeships usually involve studying an under-/postgraduate qualification.

## How to apply

If you're interested in starting an apprenticeship, you can speak to our helpful team or another member of staff who will direct you to them. We will support you in finding the right apprenticeship and employer, and we can even recommend a course alternative while an apprenticeship becomes available. You can also use our website to see the latest apprenticeship vacancies. Once you've found one you like, speak to our team or apply using the application form.

To find and apply for an apprenticeship, visit  
[harrogate-college.ac.uk/apprenticeships](https://harrogate-college.ac.uk/apprenticeships)





**T-LEVELS**

**TAKE A  
DIFFERENT  
ROUTE  
WITH T-LEVELS**

# INTRODUCING T LEVELS

## YOUR NEXT LEVEL QUALIFICATION

Discover T Levels and get hands-on with your education by combining academic learning with on-the-job skills.

T Levels are new two-year qualifications that are designed with industry in mind and recognised by over 200 businesses.

A T Level course is equivalent to three A levels and lets you learn directly from employers. You'll spend 80% of your time in college and 20% completing a 45-day placement per year – giving you the skills and knowledge employers are looking for. Your T Level will also help you step straight into your chosen career or progress on to university.

T Levels cover a wide range of professions that help you gain the experience you need to enter your desired industry. You can choose a T Level in four different areas at Harrogate College: health, computer game development, laboratory science or education and childcare.

T Levels allow you to:

- ↑ get a head start in your chosen industry
- ↑ get the equivalent of three A levels
- ↑ get academic and technical skills with 45 days of work placement per year
- ↑ learn what a career is like as you study
- ↑ learn skills demanded by the industry
- ↑ put theory into practice in real-world environments
- ↑ progress to skilled employment or further study at university.

For more information, visit  
[harrogate-college.ac.uk/t-levels](https://harrogate-college.ac.uk/t-levels)



# Science

**Kick-start your science career with our exciting range of applied science courses. Our programmes combine hands-on learning in practical laboratories with academic theory and critical thinking on contemporary science topics.**

Read more about our courses at  
[harrogate-college.ac.uk](http://harrogate-college.ac.uk)





- > Pharmacologist
- > Research Scientist



- > Food Scientist
- > Chemical Engineer



- > Biochemist
- > Biotechnologist



- > Forensic Scientist
- > University Lecturer

# Career Pathways in Science



- > Ecologist
- > Conservation Manager



- > Toxicologist
- > Microbiologist



- > Environmental Scientist
- > Environmental Consultant



- > Hydrologist
- > Renewable Energy Engineer

# Health Science Professions

Access to Higher Education Level 3

Take the next step towards a fulfilling role in health and social care with this enterprising programme. You'll strengthen your knowledge of science through independent learning. The topics in this course cover microbiology, medical physics, human physiology and cell biology. This course equips you for degree level study.

## Study length:

1 year, full time.

## Entry requirements:

A minimum of GCSE English and Maths at grade 4 or above.

## What's next?

Progression may include degree level study.

## Career opportunities:

Midwifery, Adult nursing, Paramedic training, Occupational therapy, Physiotherapy.

# Applied Science

## Extended Diploma Level 3

Become a science specialist with this Applied Science course. You'll obtain knowledge on physiology, diseases, genetics and astronomy. You will explore how to put your theories into practice in practical laboratories where you'll learn about biology, chemistry and physics. Additionally, you'll analyse and identify contemporary issues in science.

### **Study length:**

2 years, full time.

### **Entry requirements:**

Five GCSEs at grade 4 or above, including English Language and Maths.

### **What's next?**

Progression may include degree level study.

### **Career opportunities:**

Biochemist, Pharmacology, Laboratory technician, Researcher, Forensics scientist, Environmental scientist.



# Digital & IT

**Our digital and IT courses allow you to enter an industry that's more in demand than ever. Discover animation, gaming, film and more, whilst training for creative professions with hundreds of avenues to explore.**

Read more about our courses at  
[harrogate-college.ac.uk](http://harrogate-college.ac.uk)



- > Forensic Analyst
- > Helpdesk Professional
- > Applications Developer



- > Head of ICT
- > Risk Analyst
- > Network Manager

# Career Pathways in Digital & IT



- > AI & Robotics
- > Data Administrator



- > Systems Analyst
- > Systems Administrator



- > ICT Technician
- > Ethical Hacker
- > Cyber Security Architect



- > Software Designer
- > Software Engineer
- > Information Scientist

# Digital and IT

## T Level Technical Qualification Level 3

Immerse yourself in the ins and outs of software development and design. This two-year course will develop your understanding of digital technology and the impact it can have on businesses and society, both morally and ethically. From the confidentiality of personal data to emerging trends, such as artificial intelligence and augmented reality, this T Level will allow you to acquire relevant knowledge for a burgeoning industry.

### **Study length:**

2 years, full time.

### **Entry requirements:**

Five GCSEs at grade 4 or above, including English, Maths and Science.

### **What's next?**

Progression may include studying a higher apprenticeship or degree course.

### **Career opportunities:**

Web developer, Web designer, Software designer, Computer games tester, Computer games developer, E-learning developer, user experience (UX) designer.

**T-LEVELS**  
THE NEXT LEVEL QUALIFICATION



# Creative Media Production

## Extended Diploma Level 3

Sharpen your coding skills with this Level 3 diploma in creative media production. You will learn advanced techniques in a range of topics, including game engine environments, animation, film editing and production, media campaigning and 3D software. You will use C# coding to create an engaging two-level game, 3D animation to add skeleton systems to existing character meshes, and will perfect your video editing using film production techniques. This two-year course equips you with industry tools and tricks for future careers.

**Study length:**

2 years, full time.

**Entry requirements:**

Five GCSEs at grade 4 or above, including English and Maths.

**What's next?**

Progression may include study at degree level, an apprenticeship or relevant employment.

**Career opportunities:**

Graphic designer, Animator, 3D model Artist, Web designer, Video editor.

# Creative Media Production

## Extended Certificate Level 2

From 3D modelling and animation to website design and programming, you will develop multi-industry knowledge and skills with this Extended Certificate. You will use Adobe and Autodesk to develop a variety of graphical products for media and film, and will problem-solve C# code for games within the Unity game engine. You will work on creative briefs set by industry professionals and experts. You will also create your very own professional portfolio, using it to showcase your creativity and how your ideas come to life.

### **Study length:**

1 year, full time.

### **Entry requirements:**

Four GCSEs at grade 3 or equivalent.

### **What's next?**

You can progress to the Level 3 Creative Media Production course specialising in games design and film.

### **Career opportunities:**

Digital designer, Animator, Web designer, Game programmer.





# Art & Design

**Craft your creative abilities with our range of practical art and design courses.**

**Our wide selection of courses encompass many creative specialisms ranging from photography to ceramics.**

Read more about our courses at  
[harrogate-college.ac.uk](http://harrogate-college.ac.uk)



> Architect



> Fine Artist



> Videographer

> Art Director

> Special Effects Designer



> Art Therapist



> Fashion Designer

> Textile Designer

# Career Pathways in Art & Design



> Animator



> Interior Designer

> Product Designer

> Set Designer



> Photographer



> Graphic Designer

> Concept Artist

> Illustrator

# Art and Design

## Foundation Degree Level 3/4

Craft your creative talent with this course. You'll work alongside artists, designers and gallerists to create public exhibitions. You will develop skills in promoting your work, interviewing artists and developing media campaigns. This course incorporates practical skill, contextual understanding and work-based learning. By the end of the programme, you'll have developed your own specialist pathway towards a career in the creative industries.

### **Study length:**

2 years, full time.

### **Entry requirements:**

A relevant Level 3 qualification, a minimum of five GCSEs at grade 4 or above, including English, previous experience and performance at interview.

### **What's next?**

Progression may include a BA (Hons) Creative Practice Top-Up Degree or a Level 6 qualification.

### **Career opportunities:**

Any relevant employment within the creative industries where ideas and concepts are required.



# Creative Practice

## UAL Extended Diploma Level 3

Establish yourself as a creative force within a flourishing industry. This valuable diploma blends contemporary and traditional skills across core creative mediums. You will learn firsthand in our premium facilities, familiarising yourself with the workings of fine art; animation, design and illustration; 3D craft and interior design; and fashion and textiles. Through various workshops, you will identify, hone and adapt your individual style – allowing you to discover your preferred specialism and explore your options for a career in the creative arts industry.

**Study length:**

2 years, full time.

**Entry requirements:**

Four GCSEs at grade 3 or above; English and Maths is preferred. You may also showcase a small portfolio of work at your interview.

**What's next?**

Progression may include degree level study or relevant employment.

**Career opportunities:**

Fine artist, Illustrator, Curator, Graphic designer, Animator, Photographer, Print maker, Art teacher/ lecturer, Cinematographer, Interior/fashion designer.

Find a fitting medium for your artistic expression with our exclusive art programme. You will gain an understanding of traditional and digital disciplines in our sophisticated creative studios. Our experienced tutors will guide you as you delve into topics such as the transformation of art throughout history and communication design. You will acquire specialist skills and deepen your understanding of fashion, textiles, printmaking, illustration, and 2D and 3D graphic design. At the end of this course you will be able to confidently select your area of specialism within the creative industry.

**Study length:**

1 year, full time.

**Entry requirements:**

Four GCSEs at grade 3 or above; English and Maths is preferred. You may also showcase a small portfolio of work at your interview.

**What's next?**

Progression on to one of our Creative Practice Level 3 pathways.

**Career opportunities:**

Fine artist, Illustrator, Curator, Graphic designer, Animator, Photographer, Print maker, Art teacher/ lecturer, Cinematographer, Interior/fashion designer.





# Hairdressing

**Taught in our commercial salon, our hairdressing courses provide student experience in line with industry demands. Create, style and transform as you prepare for exciting roles in hairstyling, media hair and makeup artistry and more.**

Read more about our courses at  
[harrogate-college.ac.uk](http://harrogate-college.ac.uk)



- > TV & Film Stylist
- > Wigmaker/Fitter
- > Events & Bridal Stylist



- > NVQ Assessor
- > External Verifier
- > Hairdressing Tutor



- > Salon Owner
- > Salon Manager



- > Barber
- > Freelance Stylist

# Career Pathways in Hairdressing



- > Brand Manager
- > Colour Technician



- > Salon Training Manager
- > Business Development Manager



- > Senior Stylist
- > On-Location Stylist

# Hairdressing

## Diploma Level 3

Acquire the expertise you need to create stunning looks, run a busy salon and perfect the latest industry techniques with this diploma in hairdressing. You will train in our purpose-built salon, using industry-standard equipment to learn the technical tricks and methods of your favourite professionals. From hairdressing theory to advanced cutting and colouring, the skills you will gain will prepare you for future ventures in the industry. You will even experience real, busy salon environments, practising your craft on paying customers.

**Study length:**

1 year, full time.

**Entry requirements:**

Four GCSEs at grade 4 including English and Maths (or a willingness to work towards these), successful completion of Hairdressing Level 2 and regular work experience in a salon.

**What's next?**

Progression may include a higher diploma in Hair & Beauty Management, further study on business-related courses or relevant employment.

**Career opportunities:**

Salon stylist, Senior stylist, Salon owner, Colourist, Salon manager, TV/film hair stylist.



# Hairdressing

## Diploma Level 2

Whether you're interested in the secret to cutting hair or the perfect wash and blow dry technique, discover it all as you study this exciting diploma. You will learn a range of techniques including advanced cutting, styling and even best practice when it comes to consultation methods. You will study in a beautiful working salon equipped with industry-standard tools and equipment. In addition to this, you will also develop and improve your employability skills for the industry and wider sectors.

**Study length:**

1-year course.

**Entry requirements:**

Four GCSEs at grade 4 including English and Maths (or a willingness to work towards these).

**What's next?**

You can progress on to the Hairdressing Level 3 diploma or a related apprenticeship.

**Career opportunities:**

Junior stylist.



# Beauty Therapy

**Taught in a large, commercial salon, our beauty courses prepare you for this exciting industry. Discover various career routes, such as holistic therapy or salon ownership, and gain sought-after skills on our work experience programme.**

Read more about our courses at  
[harrogate-college.ac.uk](http://harrogate-college.ac.uk)

# Career Pathways

in

## Beauty Therapy



- > Mortician
- > Tattoo Artist



- > Beauty Buyer
- > Beauty Customer Adviser



- > Beautician
- > Beauty Therapist



- > Spa Owner
- > Salon Owner



- > Cosmetologist
- > TV & Film Makeup Artist



- > Nail Technician
- > Makeup Artist
- > Bridal Makeup Artist



- > Massage Therapist



- > Aesthetician
- > Skincare Consultant

# Beauty Therapy Treatments

## Diploma Level 3

Transport your clients into a world of pure indulgence and healing with a qualification in beauty therapy. You will become confident and capable of carrying out basic and complex treatments, including body massage, stone therapy and microdermabrasion. You will unpack academic topics such as anatomy, physiology and electrical treatments – resulting in well-rounded expertise. Classes take place in our professional salon under the tutelage of our industry-leading lecturers.

**Study length:**

1 year, full time.

**Entry requirements:**

Completion of Beauty Therapy Level 2.

**What's next?**

Progression may include degree level study.

**Career opportunities:**

Spa therapist, Mobile therapist, Beauty therapist, Salon manager, Salon owner.

# Beauty Therapy Specialist Treatments

**Diploma Level 2**

Enter an invigorating industry where no two days are the same with this comprehensive qualification. In our contemporary salon, you will learn to perform essential beauty treatments, including facials and waxing, all the while expanding your professional offering with manicures, pedicures and makeup application. You will become proficient in building long-lasting client relationships – setting you apart from other therapists entering the industry. Our high educational standards ensure you gain both practical skills and theoretical knowledge of human anatomy and physiology.

**Study length:**

1 year, full time.

**Entry requirements:**

Four GCSEs at grade 3 or above, including English and Maths.

**What's next?**

Progression may include a Level 3 qualification.

**Career opportunities:**

Spa therapist, Beauty therapist, Mobile therapist, Business Owner.

# Beauty Therapy

## Certificate Level 1

This course will equip you with the skills and knowledge you need to provide a basic facial, a face of makeup, a manicure and a pedicure treatment. You will gain an insight into working with others in the hair and beauty sector, as well as knowledge of health, safety and hygiene requirements.

**Study length:**

1 year, full time.

**Entry requirements:**

Aimed at those with no experience, this is the first step on the ladder to a career in the beauty industry.

**What's next?**

Certificate in Beauty Specialist Techniques Level 2.

**Career opportunities:**

Makeup artist, Skincare consultant, Nail technician, Beautician, Massage therapist, Beauty buyer, TV & film stylist, Brand manager.







# Health & Social Care

Experience the fields of health and social care. Observe specialist occupations such as midwifery, nutrition, paramedics and psychology, and train for worthy and rewarding careers on the frontline.

Read more about our courses at  
[harrogate-college.ac.uk](http://harrogate-college.ac.uk)



- > Nurse Practitioner
- > Pharmacy Technician
- > Clinical Support Worker



- > Optometrist
- > Practice Manager
- > Health Service Manager



- > Podiatrist
- > Radiographer
- > Physiotherapist



- > Social Worker

# Career Pathways

in

## Health & Social Care



- > Care Home Manager
- > Clinical Psychologist
- > Therapy Support Worker



- > Counsellor
- > Medical Secretary
- > Employability Adviser

# Education and Childcare

## T Level Technical Qualification Level 3

Learn how to nurture children and help them reach their educational milestones with this two-year T Level. You will explore the full breadth of the education and childcare sector, discovering how it differs for individuals aged 0 to 19. Because a large part of working in this sector involves interacting with parents and wider families, you will also build your confidence in family liaison. Whether it's understanding child development or the nuances of special educational needs and disabilities, you will walk away with the right skills and knowledge.

### **Study length:**

2 years, full time.

### **Entry requirements:**

Five GCSEs at grade 4 or above, including English, Maths, and Science.

### **What's next?**

Progression may include employment or further study with a degree or higher apprenticeship.

### **Career opportunities:**

Nursery worker, Teaching assistant, Learning mentor, Playworker, Special educational needs teaching assistant.

**T-LEVELS**  
THE NEXT LEVEL QUALIFICATION

# Healthcare

## T Level Technical Qualification Level 3

Offering in-depth academic learning, along with a work placement of up to 45 days that will see you strengthen your skills, this T Level is ideal for anyone looking to get to the heart of the matter in health and social care. You will explore a range of topics pertaining to health, ranging from human anatomy and infection control to providing person-centred care. You will develop your knowledge of core scientific concepts, using our industry-standard laboratories to analyse and record your findings of molecules and cell structures. Get ready to advance your understanding of the rewarding health sector.

### **Study length:**

2 years, full time.

### **Entry requirements:**

Five GCSEs at grade 4 or above, including English, Maths and Science.

### **What's next?**

Progression may include employment or further study with a degree or higher apprenticeship.

### **Career opportunities:**

Ambulance care assistant,  
Emergency care assistant,  
Care worker, Palliative care  
assistant, Healthcare assistant.

**T-LEVELS**  
THE NEXT LEVEL QUALIFICATION

# Health & Social Care

## NCFE CACHE Extended Diploma Level 3

This technical certificate helps you take the first step towards a rewarding career in healthcare. Covering a breadth of knowledge relating to a range of specialisms, you will explore human growth and development, nutrition, psychological and sociological perspectives and patient empowerment – to name a few. You will undertake a work placement and put your newfound knowledge to the test as you gain hands-on skills in real working environments. You will also participate in the planning and delivering of industry events, such as our Health Education Fair.

### **Study length:**

2 years, full time.

### **Entry requirements:**

Five GCSEs at grade 4 or above, including English, Maths and Science. A minimum of Science at grade 3 is preferable.

### **What's next?**

Progression may include degree level study, an apprenticeship or relevant employment.

### **Career opportunities:**

Adult nurse, Social worker, Paramedic science careers, Mental health nurse, Teaching assistant, Occupational therapist, Health improvement practitioner.



# Childcare and Education

## Level 3 Technical Diploma

Master early years education and care with this enterprising programme. You'll gain valuable practical work experience with the opportunity to gain a licence to practise and work unsupervised in the UK and overseas with children aged from birth up to 5 years old. You'll learn how to develop engaging activities, ensure equality, support development and practise child wellbeing.

### **Study length:**

2 years, full time.

### **Entry requirements:**

Five GCSEs at grade 4 or above, including English and Maths.  
Suitable personal reference.  
Clear DBS check.

### **What's next?**

Progression may include higher education or full-time work.

### **Career opportunities:**

Early years educator, Children's nurse, Children's social worker, Headteacher, Counsellor, Au pair.

# Health & Social Care

## Extended Diploma Level 2

From exploring legislative fundamentals to the topic of mental health, this Health and Social Care diploma introduces you to the areas vital for successful careers. You will study a range of topics including safeguarding, anatomy, infection prevention, and equality and diversity – learning how to utilise your knowledge in future job roles and real-life scenarios. You will also carry out valuable work experience with an industry employer, gaining vital skills needed to work in the field.

### **Study length:**

1 year, full time.

### **Entry requirements:**

Five GCSEs at grade 3 or above, including English and Maths.

You will have the opportunity to study English and Maths during your course if you do not already have these.

### **What's next?**

You can progress on to the Health & Social Care Level 3 course or a related apprenticeship.

### **Career opportunities:**

Care assistant, Support worker, Nursery assistant, general care work.





# Business

**Discover business courses that prepare you for the fast-paced world of retail, marketing, management and more. Each course allows you to tap into vocational skills, employer links and specialist industry connections.**

Read more about our courses at  
[harrogate-college.ac.uk](http://harrogate-college.ac.uk)

# BRAND



- > Account Director
- > Procurement Manager



- > Civil Servant
- > HR Business Partner



- > CEO
- > Product Manager



- > Entrepreneur
- > Statistician

## Career Pathways in Business



- > Marketing Manager



- > Recruitment Consultant
- > Chartered Legal Executive



- > Data Analyst
- > Merchandising Manager
- > Management Information Scientist



- > Business Analyst
- > Logistics Manager

# Finance

## T Level Technical Qualification Level 3

This T Level will boost your understanding of the financial work environment, allowing you to take a deeper look at business models, tax laws and the principles of ethical conduct.

As well as acquiring fundamental knowledge in accounting, you will also build your awareness of data-driven innovation analytics. You will be able to put all of your learning to the test during a work placement that will equip you with the correct occupational skills.

### Study length:

2 years, full time.

### Entry requirements:

Five GCSEs at grade 4 or above, as well as a minimum of grade 6 in GCSE Maths.

### What's next?

Progression may include study at degree level, a higher apprenticeship or entering the industry through employment.

### Career opportunities:

Bank manager, Mortgage adviser, Insurance underwriter, Pensions Administrator, Credit controller, Credit adviser.

**T-LEVELS**  
THE NEXT LEVEL QUALIFICATION

# Business

## Level 3 Extended Diploma

From online content to memorable branding, this Level 3 diploma brings the thrilling world of marketing to your door. You will explore core principles of marketing, developing your understanding of key topics and devices such as market research, event marketing, customer communications and brand activation.

### **Study length:**

2 years, full time.

### **Entry requirements:**

Five GCSEs at grade 4 or above, including English and Maths.

### **What's next?**

Progression may include study at degree level, an apprenticeship in marketing or relevant employment.

### **Career opportunities:**

Marketing executive, Digital marketing specialist, Event planner, Brand manager, PR executive, Head of marketing.



# Marketing

## BTEC National Extended Diploma Level 3

From online content to memorable branding, this Level 3 diploma brings the thrilling world of marketing to your door. You will explore core principles of marketing, developing your understanding of key topics and devices such as market research, event marketing, customer communications and brand activation. Alongside studying course content developed in collaboration with employers and higher educational bodies, you will carry out work experience – putting your learnings into practice. This course will prove to be only the start of your exciting marketing career.

### **Study length:**

2 years, full time.

### **Entry requirements:**

Five GCSEs at grade 4 or above, including English and Maths.

### **What's next?**

Progression may include study at degree level, an apprenticeship in marketing or relevant employment.

### **Career opportunities:**

Marketing executive, Digital marketing specialist, Event planner, Brand manager, PR executive, Head of marketing.

# Business

## Level 2 Extended Certificate

Aimed at anyone with an interest in increasing their employability, this course covers finance, events, corporate social responsibility and customer service. This programme is carefully crafted on employer demands across a variety of industries, encompassing decision-making and HR analytics.

### **Study length:**

1 year, full time.

### **Entry requirements:**

Four GCSEs at grade 3 or above, including English and Maths.

### **What's next?**

Progression may include a Level 3 qualification.

### **Career opportunities:**

Marketing manager, Account director, Business analyst, Data analyst, Recruitment consultant, HR business partner.



# Catering & Hospitality

**Catering and hospitality equips you with the knowledge for thriving careers. Train in our kitchens, visit hospitality venues and use our industry links to gain invaluable professional experience.**

Read more about our courses at  
[harrogate-college.ac.uk](http://harrogate-college.ac.uk)



- > Head Chef
- > Production Chef



- > Product Tester
- > Brand Manager
- > Retail Merchandiser



- > Sous Chef
- > Patisserie Chef



- > Wine Merchant
- > Product Manager

# Career Pathways

in

## Catering & Hospitality



- > Nutritionist
- > Environmental Manager
- > Customer Insight Manager
- > Health & Safety Manager



- > Restaurant Manager
- > Hospitality Manager
- > Manufacturing Manager

Perfect your hospitality skills in our award-winning Craft Bistro. This course will expose you to the actual workings of a kitchen, management team and the industry. You will deal with real paying customers to build your people skills. You will get in the kitchen and behind the coffee bar to experience the ins and outs of creating dishes in a real-world setting. You will add to your artillery of hospitality knowledge by covering specialist subjects, including banqueting and table service – giving you an edge when entering this exciting industry.

**Study length:**

1 year, full time.

**Entry requirements:**

Four GCSEs at grade 3 or above, preferably including English and Maths.

**What's next?**

Progression may include further courses in professional cookery or business management, or a relevant apprenticeship.

**Career opportunities:**

Events manager, Kitchen team member, Restaurant staff, Trainee chef.

# Professional Cookery

## Diploma Level 2

This diploma in professional cookery helps you master your culinary finesse, training you for the pressure and excitement of professional kitchens. You will learn how to prepare a kitchen for service, work a cook line, put your own creative twists on classic dishes and serve them up in our commercial training restaurant. You will even take part in a work placement, where you can put your expert skills to the test. This course is also industry recognised for its current and relevant curriculum, providing you with skills and knowledge in food hygiene, catering operations, the latest industry trends and more.

### **Study length:**

1 year, full time.

### **Entry requirements:**

Four GCSEs at grade 3 or above; English and Maths is preferred, along with a hospitality-based qualification. We also welcome people with previous cooking experience.

### **What's next?**

Progression may include a Level 3 course or apprenticeship, or relevant employment.

### **Career opportunities:**

You can go on to work as a commis chef or a chef de partie.



# Construction & Joinery

**Be it bricklaying or multi-trade joinery, you will learn from professionals, develop skills and hone your craft in industry-standard workshops. Use your newfound skills to progress across the industry or cement them further with an apprenticeship.**

Read more about our courses at  
[harrogate-college.ac.uk](http://harrogate-college.ac.uk)





- > Site Manager
- > Architectural Technician
- > Building Control Officer



- > Health & Safety Manager
- > Digital Engineering Technician



- > Bricklayer
- > Site Joiner
- > Project Manager

# Career Pathways

in

## Construction & Joinery



- > CAD Operative
- > Quantity Surveyor
- > Demolition Worker



- > Furniture Maker
- > Civil Engineering Technician



- > Contracts Manager
- > Chartered Surveyor
- > Building Services Engineer

# Building Services Engineering for Construction

## T Level Technical Qualification Level 3

This technical qualification was especially developed to help aspiring engineers specialise in the building services industry. It will prepare you for a career as an electrotechnical engineer (also known as an installation electrician).

You will explore wiring practices, containment systems, removal processes, and health and safety practices associated with electrical engineering.

### Study length:

2 years, full time.

### Entry requirements:

Five GCSEs at grade 4 or above, plus a grade 5 in both English and Maths.

### What's next?

Further study at degree level, higher level apprenticeships or employment in an electrotechnical role.

### Career opportunities:

Installation electrician, Electrical building inspector, HV electrician, Electrical installations Apprentice installer, Maintenance electrician.

**T-LEVELS**  
THE NEXT LEVEL QUALIFICATION

With both domestic and commercial construction projects on the rise, bricklaying is becoming a top career choice. In our custom-built workshop, you will gain firsthand experience in a range of areas, including masonry and cladding. You will familiarise yourself with different materials and techniques. You will learn to interpret working drawings with ease – allowing you to develop sound structures and get straight to work as soon as you get on site.

**Study length:**

1 year, full time.

**Entry requirements:**

Four GCSEs at grade 3 or above, including English and Maths.

**What's next?**

Progression may include a Level 3 qualification or an apprenticeship.

**Career opportunities:**

A bricklayer on large or small construction projects and self-employment.

# Site Carpentry

## Diploma Level 2

Build your career from the ground up with an industry-recognised qualification. Learn how to use the tools of the trade, expand your knowledge and improve your carpentry abilities through a blend of theoretical and practical learning. In preparation for working life, you will spend time installing, measuring, shaping, constructing, and repairing various materials and frameworks in our purpose-built workshop. You will also master the art of window, door frame and staircase creation, allowing you to excel in an on-site environment of your choice.

### **Study length:**

1 year, full time.

### **Entry requirements:**

Four GCSEs at grade 3 or above, including English and Maths, or a relevant Level 1 qualification.

### **What's next?**

Progression may include relevant employment or an apprenticeship.

### **Career opportunities:**

Entry level carpenter.

# Painting & Decorating

## Diploma Level 2

With home improvement projects continuing to rise, the skills of painters and decorators have never been more in demand. This course teaches you how to mould those skills into a flourishing career, covering a range of topics including the principles of building, the preparation of surfaces, and applying paints and wallpapers. You will study in our brand new workshop, learning to use your skills to a high standard as you work on simulated projects that replicate the workplace. Best of all, your expert skills will also prove handy for when you own your own home.

### **Study length:**

1 year, full time.

### **Entry requirements:**

English and Maths at grade 4 or above is preferred. Successful completion of a Level 1 course such as Construction Skills (Multiskills) is also desirable.

### **What's next?**

You can progress to the Painting & Decorating Level 3 course.

### **Career opportunities:**

Apprentice painter/decorator,  
Professional painter/decorator,  
self-employed painter/decorator.

# Construction Skills (Multiskills)

## Level 1 Certificate

Our Construction Skills course helps you pinpoint the trade you want to specialise in. It allows you to sample and test your ability in different trade areas, whilst building your knowledge of the construction industry as a whole. You will discover bricklaying, painting, decorating and joinery (to name a few) – giving you skills for a variety of tasks and trades. Our state-of-the-art technology centre will also become your classroom, where you will work on simulated projects and scenarios using our construction yard, joinery suite and more.

### **Study length:**

1 year, full time.

### **Entry requirements:**

This course has no formal entry requirements but an interest in construction is essential.

### **What's next?**

You can progress on to a Level 2 course in joinery, bricklaying, and painting and decorating.

### **Career opportunities:**

Construction manager,  
Building surveyor, Bricklayer,  
Carpenter, Joiner, Professional  
painter/decorator.







# Electrical

**Discover expert teaching and quality workmanship with our electrical courses – designed to equip you with skills of the trade. Get hands-on in custom-built workshops as you train for a range of specialisms.**

Read more about our courses at  
[harrogate-college.ac.uk](http://harrogate-college.ac.uk)



- > Site Manager
- > Site Supervisor
- > Estimating Manager



- > Electrician
- > Electronics Test Engineer



- > Heating Engineer
- > Domestic Installer
- > Commercial Installer

# Career Pathways in Electrical



- > Repair Technician
- > Renewable Energy Electrician



- > Building Services Engineer
- > Electrical Projects Manager
- > Telecommunications Engineer



- > Electronics Engineer
- > Electronics Assembly
- > Sound & Lighting Engineer

# Electrical Installations

## Diploma Level 3

If you are interested in developing the specific technical and professional skills that will lead to meaningful employment in the electrotechnical industry, this qualification is for you. You will explore a wide range of industry areas, including principles of electrical science, inspection and testing, and electrical system diagnosis.

### **Study length:**

1 year, full time.

### **Entry requirements:**

Four GCSEs at grade 4 or above in English, grade 5 in Maths and successful completion of the Electrical Installations Diploma Level 2 programme.

### **What's next?**

Progression may include further study to achieve fully qualified electrician status, as an electrical installer or maintenance electrician; an apprenticeship; or a higher education qualification.

### **Career opportunities:**

Electrical apprentice, Electrical improver, Electrician's Mate.

# Electrical Installations

## Diploma Level 2

If you are curious about a career in electrical operations but don't know where to start, this Level 2 diploma offers the perfect stepping stone. It will teach you foundational knowledge of the electrical installation trade, introducing you to electrical processes, operations, wiring and more.

### **Study length:**

1 year, full time.

### **Entry requirements:**

Four GCSEs at grade 4 or above, including English and Maths. Maths at this level or higher is an essential requirement.

### **What's next?**

Progression may include a Level 3 course or apprenticeship, or relevant employment.

### **Career opportunities:**

Electrical apprentice, Electrical improver, Electrician's mate.

# Electrical Installations

## Level 1 Diploma

In this Electrical qualification you will study:

- fundamental safe working practices
- structure of the construction industry
- environmental and sustainability measures in domestic dwellings
- site preparation in the construction industry
- wiring and terminations
- fabrication techniques
- electrical science and technology.

### **Study length:**

1 year, full time.

### **Entry requirements:**

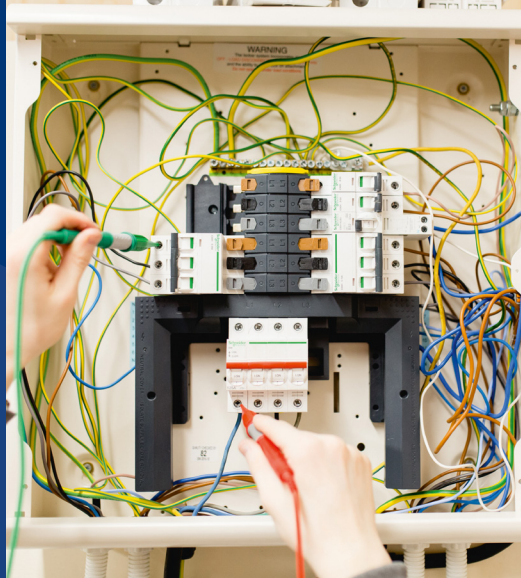
GCSE 1-3 English/Maths and one other subject.

### **What's next?**

Progression on to the next level and also moving into apprenticeships.

### **Career opportunities:**

Electrical apprentice, Electrical improver, Electrician's Mate.





# Motor Vehicle

**Taught in a real working garage, our motor vehicle courses offer access to all the tools and resources you need. From car manufacturing to the armed forces, there are plenty of career routes available.**

Read more about our courses at  
[harrogate-college.ac.uk](http://harrogate-college.ac.uk)





- > Estimator
- > Workshop Manager
- > Vehicle MET Technician



- > Delivery Driver
- > Business Owner
- > Car Salesperson
- > Stock Controller

# Career Pathways

in

## Motor Vehicle



- > Paint Technician
- > Driving Instructor
- > Body Shop Manager
- > HGV Driving Assessor



- > Welder
- > Motor Vehicle Mechanic



- > MOT Tester
- > Auto Electrician
- > Auto Care Technician

# Motor Vehicle

## Diploma Level 2

Advance your automotive knowledge with this hands-on Level 2 course. You will learn how to service and repair vehicles, using fault finding and diagnostic testing to familiarise yourself with the engines and mechanical systems. You will be taught by industry professionals in our very own working motor vehicle garage, using industry-standard tools and equipment to carry out your own customisations. At the end of your course you will gain an industry-recognised qualification that will kick-start careers in the motor trade.

### **Study length:**

1 year, full time.

### **Entry requirements:**

There are no entry requirements for this course, however, an interest in motor vehicles is desirable.

### **What's next?**

Progression may include studying a Level 3 course or a relevant apprenticeship.

### **Career opportunities:**

You can progress on to an apprenticeship within the motor trade industry.

# Motor Vehicle

## Diploma Level 1

Our Motor Vehicle course helps you take your interest in cars and mechanics to the next level. You will study in our very own working motor vehicle garage, developing and fine-tuning your practical and theoretical automotive engineering knowledge. You will be taught by skilled professionals and will use industry-standard tools and equipment to carry out your own modifications and assessments – ready for the world of work.

### **Study length:**

1 year, full time.

### **Entry requirements:**

There are no entry requirements for this course, however, an interest in motor vehicles is desirable.

### **What's next?**

Progression may include studying the Motor Vehicle Level 2 course or a relevant apprenticeship.

### **Career opportunities:**

You can progress on to an apprenticeship within the motor trade industry.



# Sport

**From anatomy and physiology to coaching techniques and enhancing sports performance – develop skills, knowledge and discipline for careers in sports coaching, marketing and more.**

Read more about our courses at  
[harrogate-college.ac.uk](http://harrogate-college.ac.uk)



- > PE Teacher
- > Personal Trainer
- > Sports Development Officer



- > Lifeguard
- > Gym Manager
- > Sports Marketing Officer

# Career Pathways in Sport



- > Nutritionist
- > Event Manager
- > Sports & Exercise Scientist



- > Sport Scientist
- > Physiotherapist
- > Sports Therapist
- > Sport Psychologist



- > Grounds Person
- > Sport Journalism
- > Leisure Centre Manager

# Sport, Fitness and Personal Training

## Diploma Level 3

This qualification allows you to develop your skills in fitness and personal training, whilst opening up a world of opportunities in the sports industry. You will develop your personal trainer skills, exploring various career opportunities such as self-employment, whilst building knowledge in fitness testing, sports injuries and strengthening the body for optimum performance. You will even have the opportunity to play competitively in the regional and national college sports network, putting your skills into practice as you represent the college.

### **Study length:**

1 year, full time.

### **Entry requirements:**

Five GCSEs at grade 4 or above, including English and Maths.

### **What's next?**

Progression may include employment or further study with a degree or higher apprenticeship.

### **Career opportunities:**

Personal trainer, Gym instructor, Sports management, Leisure centre assistant, Sports nutritionist, self-employment.

# Sports Coaching & Development

## Diploma Level 3

This active diploma allows you to develop your skills in sports coaching and development, whilst opening up a world of opportunities in the sports industry. You will gain knowledge of anatomy and physiology, nutrition, sports psychology and injuries, discovering how to train, strengthen and nurture the body for optimum performance. You will delve into the business world, learning the requirements for successful sports businesses. You will even have the opportunity to play competitively in the regional and national college sports network – putting your skills into practice as you represent the college.

### **Study length:**

2 years, full time.

### **Entry requirements:**

Five GCSEs at grade 4 or above, including English and Maths.

### **What's next?**

You can progress on to higher education or relevant employment.

### **Career opportunities:**

Personal trainer, Sports coach, Gym instructor, Sports management, Sports nutritionist, Sports massage therapist.

# Gym Instructing

## Certificate Level 2

This programme delivers the knowledge and skills needed to meet the Register of Exercise Professional Standards (REPS), which allows you to work as a gym instructor. It helps you develop a wide range of transferable skills and involves a work placement that can be conducted in a range of fitness settings. This year-long course combines both practical and theoretical elements that employers look for, while preparing you for progression into further study or employment.

### **Study length:**

1 year, full time.

### **Entry requirements:**

Minimum of four GCSEs at grade 5 or above, including English and/or ideally Maths, or equivalent (eg. Level 1 Functional Skills). Interest and experience in physical activity and a good level of fitness.

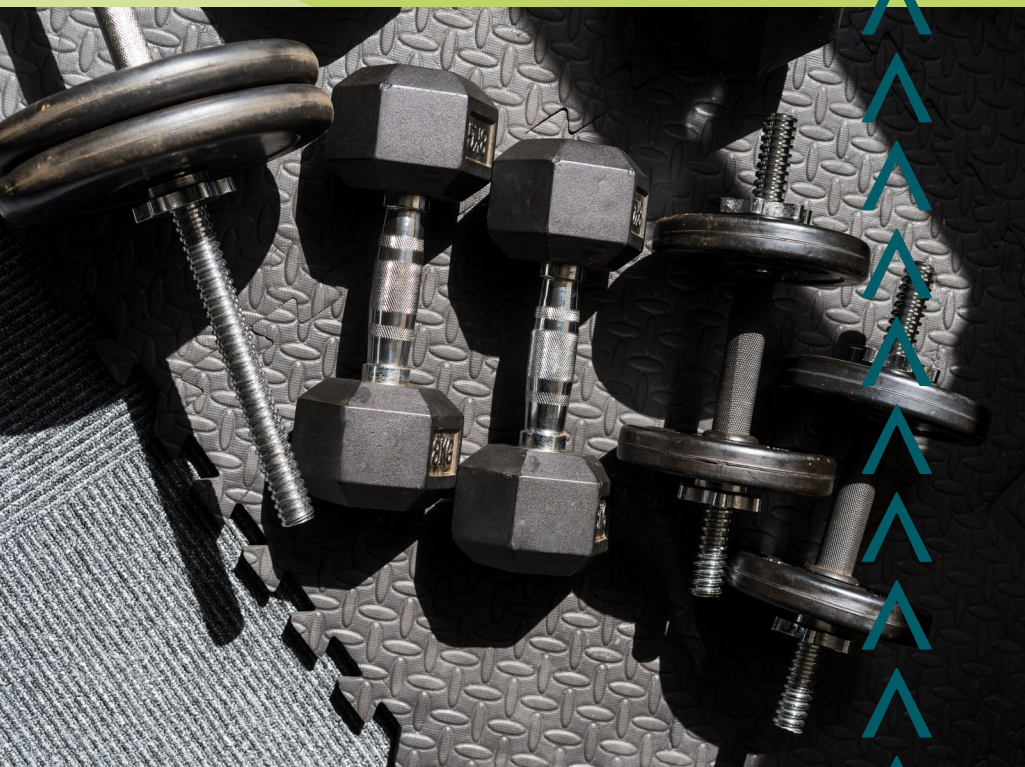
### **What's next?**

Level 3 qualifications, an apprenticeship or employment within the sports and fitness industry.

### **Career opportunities:**

Gym instructor, Personal trainer, Fitness instructor, Sports Coach, PE teacher.







# Uniformed Public Services

**Discover uniformed public services and embark on character-building experiences such as riot training, caving and the Harrogate Police Cadets. Uncover a host of rewarding career opportunities – from the fire brigade to careers in criminology.**

Read more about our courses at  
[harrogate-college.ac.uk](http://harrogate-college.ac.uk)



- > Dog Handler
- > Police Officer
- > Community Safety Officer



- > Data Analyst
- > Prison Officer
- > Border Force Officer



- > RAF Officer
- > Army Officer
- > Naval Officer

# Career Pathways

in

## Uniformed Public Services



- > Detective
- > Intelligence Officer
- > Forensic Psychologist



- > Paramedic
- > Firefighter
- > Site Security Manager
- > Emergency Call Handler

# Uniformed Public Services

## BTEC Diploma Level 3

Discover what you're truly made of as you train for the Uniformed Public Services. This two-year course will prepare you for the police, fire and emergency services or the armed forces, pushing your endurance and comfort levels through exciting and challenging activities. From wall climbing, caving and canoeing, to exploring the human body, criminology and responding to emergency incidents, you will satisfy your love for adventure, duty and justice as you gain valuable skills required for specialist and elite units.

### **Study length:**

2 years, full time.

### **Entry requirements:**

Four GCSEs at grade 4 or above, including English and Maths.

### **What's next?**

Progression may include further study at degree level or an application to your chosen Uniformed Services department.

### **Career opportunities:**

Police officer, Police community support officer, Specialist police roles (i.e. firearms), Paramedic, Army officer.





# ESOL

**Is English your second language?  
Learn how to speak, read and write  
English for work, school or everyday  
interactions with courses designed for  
English speakers of other languages.**

Read more about our courses at  
[harrogate-college.ac.uk](http://harrogate-college.ac.uk)

# English Speakers of Other Languages (ESOL)

Entry Level – Level 2

Improve your English for school, work and life on this friendly and educational course. You will perfect your everyday English, working on your speaking, listening, reading and writing skills. You will study with people from all backgrounds and will receive help and support from friendly tutors. This is a great way to use English to reach your personal goals.

## **Study length:**

Full-time and part-time learning available.

## **Entry requirements:**

There are no entry requirements for this course.

## **What's next?**

You can progress on to any course or apprenticeship of your choice.

## **Career opportunities:**

Various roles and industries.



# Foundation Learning

From skills for the workplace to perfecting your maths and English, get to where you want to be with courses in foundation learning.

Read more about our courses at  
[harrogate-college.ac.uk](http://harrogate-college.ac.uk)



# Enterprise & Employability

## Level 1 Certificate

This course allows you to experience aspects of our full-time course without committing to one specific subject. You will develop your English and maths skills, work on your social and personal development, and will study different topics to help you choose what you'd like to specialise in. This course is ideal if you'd like to gain new skills whilst exploring different career and study options. You will also get to experience the student activities and college life Harrogate College has to offer.

### **Study length:**

1 year, full time.

### **Entry requirements:**

There are no entry requirements for this course.

### **What's next?**

You can progress on to a Level 2 course or apprenticeship of your choice.

### **Career opportunities:**

Various roles and industries, depending on your chosen career.

This course will build the skills and behaviours to be able to be employed. This may include work with support, but the intention is to support students to be actively employed. The range of jobs is not exhaustive. Students will be supported to follow their interests. Over the duration of the courses students will spend time on supported internships and work placements to help them become job ready.

**Study length:**

2 years, full time.

**Entry requirements:**

No formal entry requirements.

**What's next?**

The intention of this course is to progress into full-time employment or higher level study linked to job-specific skills.

Progress on to a higher level qualification, develop independent living skills, take part in a supported internship, secure employment.

# Preparation for Work (RARPA)

## Entry Level – Level 2

This course teaches skills and behaviours for employment and life progression. You will carry out a supported internship or work placement, whilst undergoing project-based learning focusing on English, maths and STEM skills in a subject that interests you. You will also learn skills for independent living, such as cooking and financial budgeting, along with general societal skills including equality and diversity, and safety at home, work and online.

### **Study length:**

1 year, full time.

### **Entry requirements:**

There are no entry requirements for this course.

### **What's next?**

Progression may include full-time employment, higher level study and reaching personal life goals, such as living independently.

### **Career opportunities:**

Progression on to the Level 1 Enterprise and Employability course.

# Where to find us

---

**Where possible, we encourage all staff, students, parents/carers and visitors to travel sustainably.**



## **Walking**

Stretch your legs with a walk over the famous Stray! The walk to/from Harrogate town centre will take you approximately 20 minutes – if you walk this briskly then it counts as exercise.



## **Cycling**

Pedal power! Using your bicycle is a cheap, enjoyable and healthy way to travel to college, and is also great for the environment. The cycling route to/from Harrogate town centre, via the Stray, should take around 10 minutes or less. The bike shelters at college are safe and available to all staff and students.



## **Train**

The college is just a two-minute walk from Hornbeam Park train station, which is on the York to Leeds line. In just three minutes, students boarding a train from Harrogate station will arrive at Hornbeam Park station.



## Bus

Harrogate College is served by an extensive public bus network; here are just a few examples of how you can get to us:

**Wetherby** – 7 bus or X70 bus

**Boroughbridge** – 21 bus to Knaresborough  
then 1, 1A, 1B, 1C, 1D

**Leeds & Ripon** – 36 bus

**Knaresborough** – 1, 1A, 1B, 1C, 1D

**Pateley Bridge** – 24 bus



## Car

Free parking is available for staff and students who register for a permit.

**For information on your route to college or financial assistance with travel, please visit our website.**

Harrogate College, Hornbeam Park Avenue, Hornbeam Park,  
Harrogate, HG2 8QT







HARROGATE COLLEGE

PLEASE DO NOT  
ENTER BUILDING  
UNTIL TOLD TO DO SO

Apply now

**Call: 01423 879 466**

**Email: [contact@harrogate-college.ac.uk](mailto:contact@harrogate-college.ac.uk)**

**Visit: Harrogate College  
Hornbeam Park Ave  
Harrogate  
HG2 8QT**

Disclaimer: The information contained in this guide is accurate at the time of printing, but changes may take place. Some variation may occur as a result of circumstances beyond our control. Please see our website [www.harrogate-college.ac.uk](http://www.harrogate-college.ac.uk) for the most up-to-date information regarding our courses and support for students.

Design by Luminate Education Group  
2022



